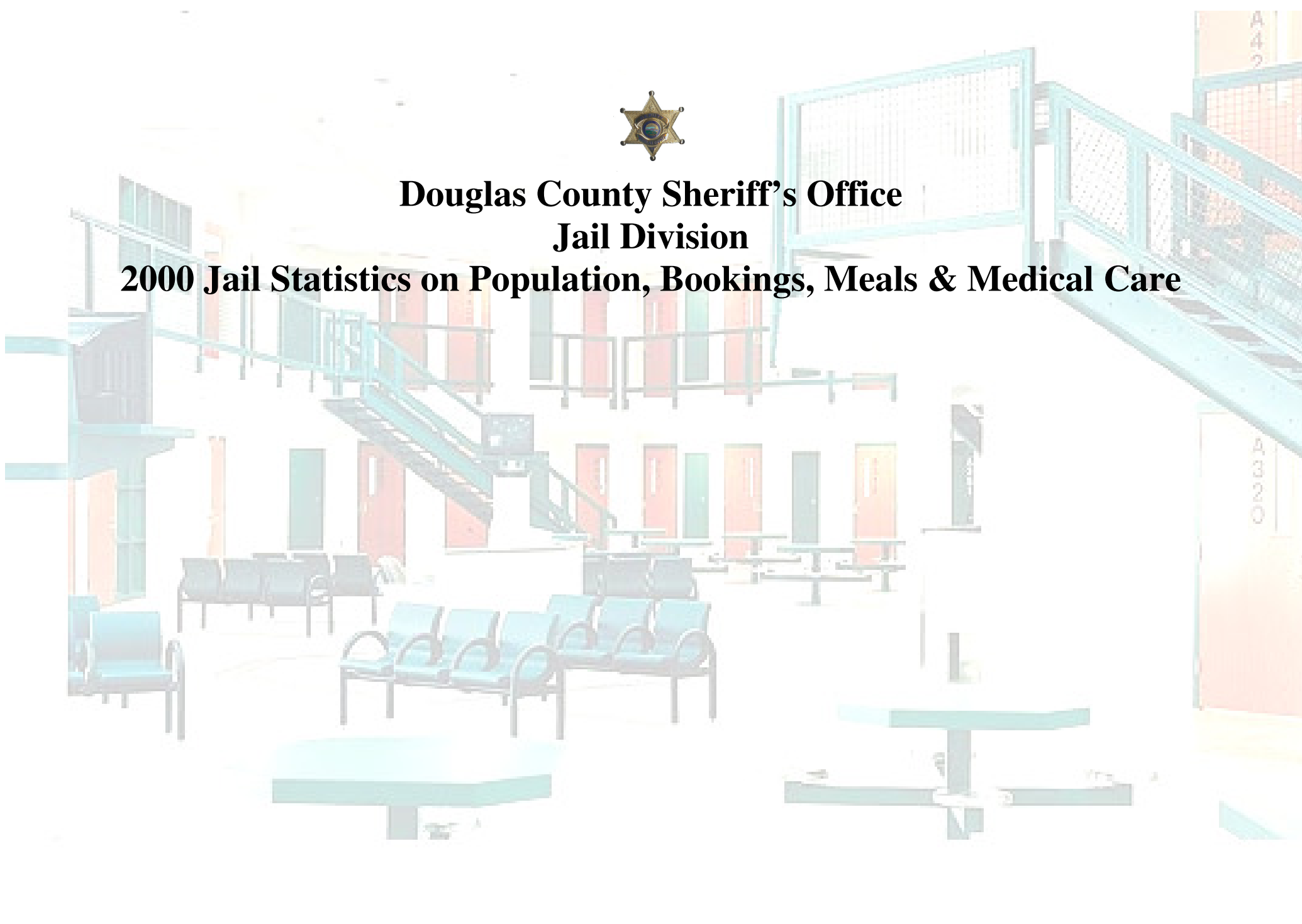




**Douglas County Sheriff's Office  
Jail Division**

**2000 Jail Statistics on Population, Bookings, Meals & Medical Care**



**January 2000**

Total # of Bookings – 400 Inmates (318 male, 82 female)

Average Daily Population- 108 inmates

Average Population of males- 94 inmates

Average Population of females- 13 inmates

Ethnicity breakdown based on Average Daily Population-

Caucasian- 65%

Black- 26%

Hispanic- 2%

Native American- 5%

Asian- 1%

Other- 1%

**February 2000**

Total # of Bookings – 482 Inmates (375 male, 107 female)

Average Daily Population- 115 inmates

Average Population of males- 100 inmates

Average Population of females- 13 inmates

Ethnicity breakdown based on Average Daily Population-

Caucasian-62 %

Black- 25%

Hispanic- 2%

Native American-9%

Asian- 2%

Other- None

**March 2000**

Total # of Bookings – 585 Inmates (440 male, 145 female)

Average Daily Population- 118 inmates

Average Population of males- 104 inmates

Average Population of females- 13 inmates

Ethnicity breakdown based on Average Daily Population-

Caucasian- 59%

Black- 29%

Hispanic- 2%

Native American- 9%

Asian- 1%

Other- None

**April 2000**

Total # of Bookings – 523 Inmates (427 male, 96 female)

Average Daily Population- 103 inmates

Average Population of males- 89 inmates

Average Population of females- 13 inmates

Ethnicity breakdown based on Average Daily Population-

Caucasian- 59%

Black- 29%

Hispanic- 1%

Native American- 9%

Asian- 2%

Other- Less than 1%

**May 2000**

Total # of Bookings – 492 Inmates (374 male, 118 female)

Average Daily Population- 104 inmates

Average Population of males- 87 inmates

Average Population of females- 16 inmates

Ethnicity breakdown based on Average Daily Population-

Caucasian- 56%

Black- 30%

Hispanic- 3%

Native American- 10%

Asian- 1%

Other- None

**June 2000**

Total # of Bookings – 465 Inmates (365 male, 100 female)

Average Daily Population- 109 inmates

Average Population of males- 92 inmates

Average Population of females- 16 inmates

Ethnicity breakdown based on Average Daily Population-

Caucasian- 57%

Black- 29%

Hispanic- 1%

Native American- 12%

Asian- 1%

Other- None

**July 2000**

Total # of Bookings – 462 Inmates (372 male, 90 female)  
 Average Daily Population- 113 inmates  
 Average Population of males- 95 inmates  
 Average Population of females- 17 inmates  
 Ethnicity breakdown based on Average Daily Population-  
 Caucasian- 55%  
 Black- 30%  
 Hispanic- 2%  
 Native American- 11%  
 Asian- 2%  
 Other- Less than 1%

**August 2000**

Total # of Bookings – 533 Inmates (426 male, 107 female)  
 Average Daily Population- 125 inmates  
 Average Population of males- 107 inmates  
 Average Population of females- 17 inmates  
 Ethnicity breakdown based on Average Daily Population-  
 Caucasian- 56%  
 Black- 32%  
 Hispanic- 3%  
 Native American- 8%  
 Asian- 1%  
 Other- less than 1%

**September 2000**

Total # of Bookings – 472 Inmates (362 male, 110 female)  
 Average Daily Population- 129 inmates  
 Average Population of males- 112 inmates  
 Average Population of females- 16 inmates  
 Ethnicity breakdown based on Average Daily Population-  
 Caucasian- 58%  
 Black- 30%  
 Hispanic- 1%  
 Native American- 10%  
 Asian- 1%  
 Other- None

**October 2000**

Total # of Bookings – 504 Inmates (403 male, 101 female)  
 Average Daily Population- 139 inmates  
 Average Population of males- 122 inmates  
 Average Population of females- 16 inmates  
 Ethnicity breakdown based on Average Daily Population-  
 Caucasian- 60%  
 Black- 27%  
 Hispanic- 2%  
 Native American- 10%  
 Asian- 1%  
 Other-None

**November 2000**

Total # of Bookings – 402 Inmates (330 male, 72 female)  
 Average Daily Population- 131 inmates  
 Average Population of males- 118 inmates  
 Average Population of females- 12 inmates  
 Ethnicity breakdown based on Average Daily Population-  
 Caucasian- 61%  
 Black- 27%  
 Hispanic- 4%  
 Native American- 7%  
 Asian- 1%  
 Other- None

**December 2000**

Total # of Bookings – 406 Inmates (316 male, 90 female)  
 Average Daily Population- 113 inmates  
 Average Population of males- 100 inmates  
 Average Population of females- 12 inmates  
 Ethnicity breakdown based on Average Daily Population-  
 Caucasian- 60%  
 Black- 29%  
 Hispanic- 3%  
 Native American- 7%  
 Asian- 1%  
 Other- None

2000 Average Daily Population using the average numbers listed previously comes out to be 117.  
Break that down further 102 were male and 15 were female.

Total bookings for the year were 5,726.

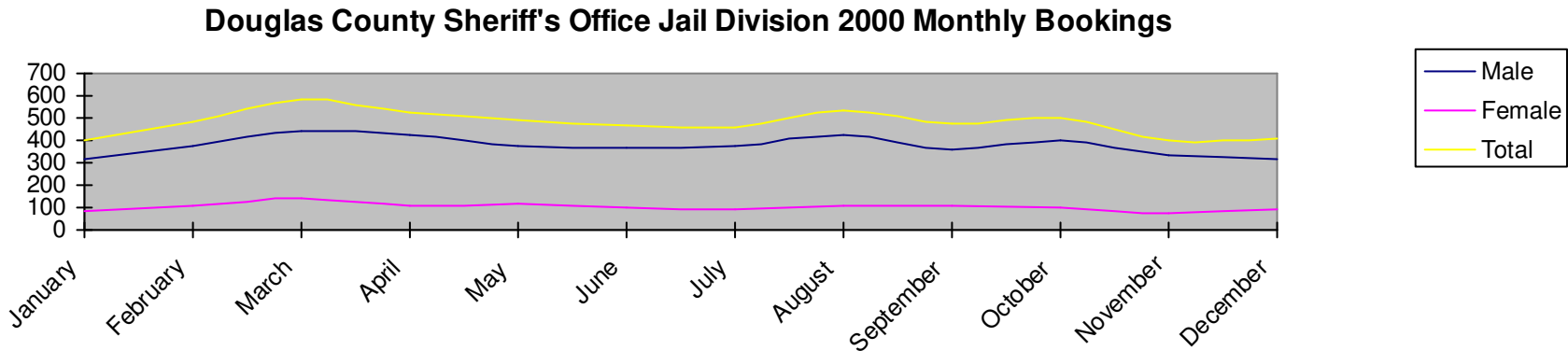
See supporting charts-

*2000 Monthly Bookings*

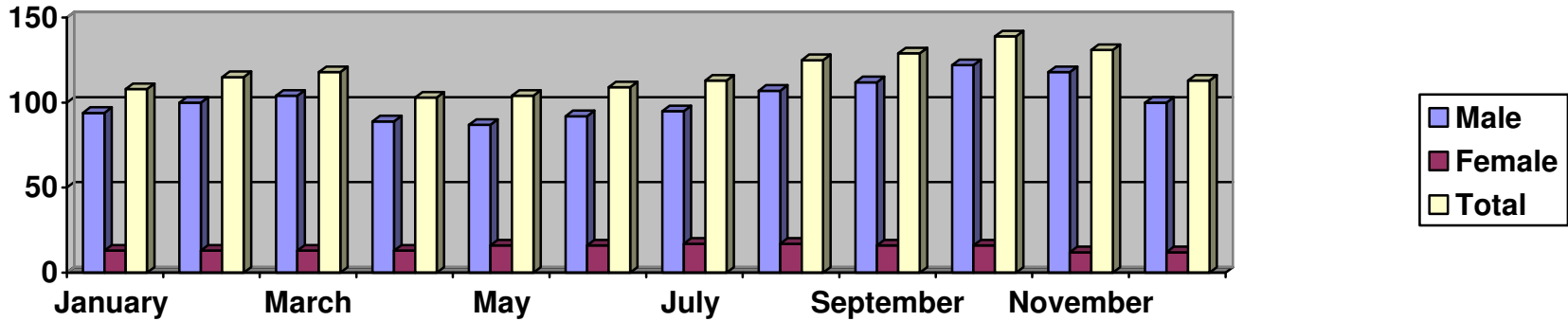
*2000 Average Daily Jail Population*

*2000 Ethnicity break down based on Average Daily Jail Population*

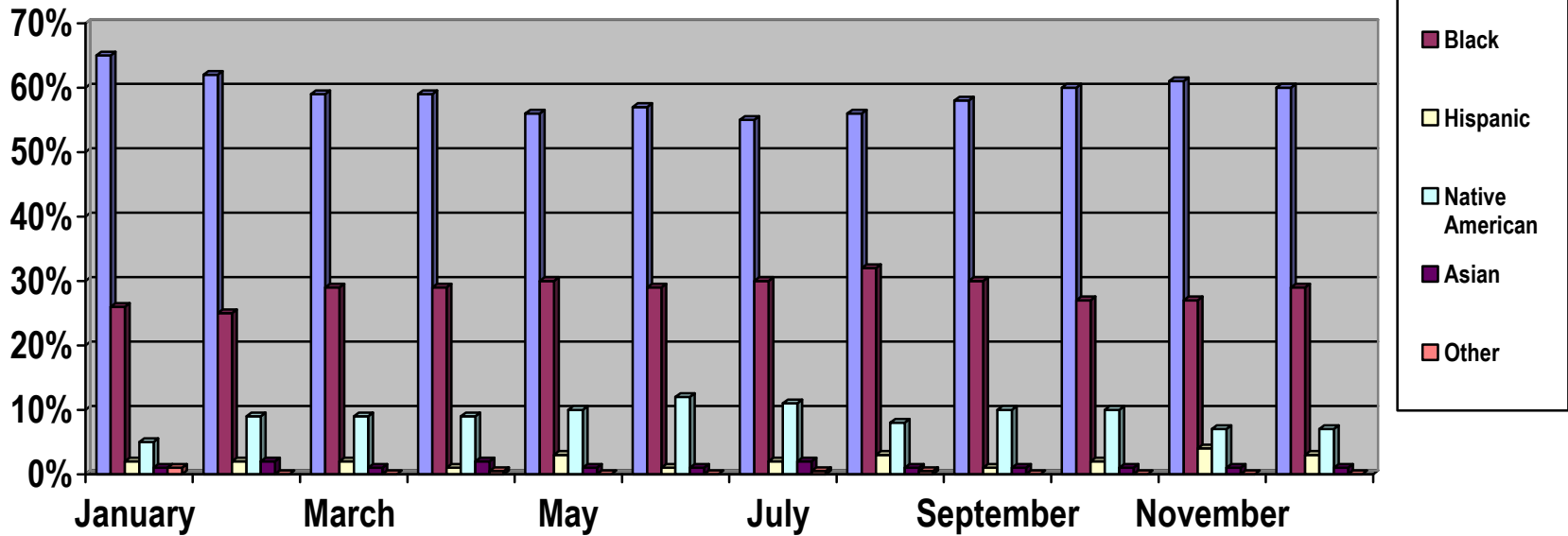
[Statistics taken from "Jalan" monthly reports - "Population Accounting Form-B. Demographics", "County Population Report", and "Booking per day Report" provided by Kimberley Smoots ]



Douglas County Sheriff's Office  
 Jail Division  
 2000 Average Daily Jail Population



Douglas County Sheriff's Office  
 Jail Division  
 2000 Ethnicity break down based on Average Daily Jail Population



**Kitchen Costs 2000** [Statistics taken from Linda Grant, CDM CFPP, Monthly Excel Kitchen and Food Costs Breakdown Report]

Total Costs of groceries, paper goods, cleaning supplies and small equipment- \$290,649.51

Total Meals served- 145,826

Total Costs divided by Total Meals= \$1.99 average cost for each meal

**Jail Medical Activity 2000**

Daily Clinic – 2996

Physicals- 454

Dr. Clinic- 207

Questions- 323

Lab- 105

**Jail Medical Activity, Out of Facility 2000**

X-Ray- 13

Dentist- 14

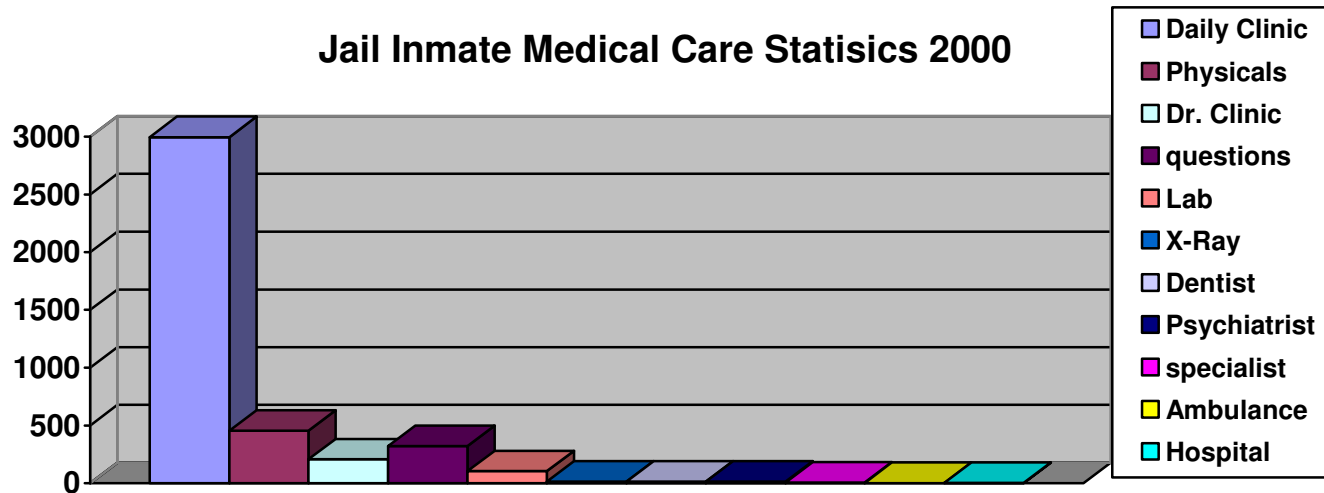
Psychiatrist- 14

Specialist- 5

Ambulance- 1

Hospital- 2

The Jail’s medical staff resolved 98.9 % of the inmate health related issues within the facility.



[Statistics taken from VNA Monthly Health Care Services Log, provided by Lt. Wempe]