



**Douglas County Sheriff's Office  
Jail Division**

**2005 Jail Statistics**

**on Population, Bookings, Kitchen and Meal Costs, Medical and Mental Health Overviews, Disciplinary Hearings, Overtime, Inmate Worker Program, Work Release Program, Disturbance Control Team & Cost of Overcrowding**

**January 2005**

Total # of Bookings – 444 Inmates (367 male, 77 female)

Average Daily Population- 156 inmates

Average Population of males- 133 inmates

Average Population of females- 23 inmates

Peak Daily Population- 168

Ethnicity breakdown based on Average Daily Population-

Caucasian- 64%

Black- 23%

Hispanic- 4%

Native American- 7%

Asian- 2%

Other- 0%

Age of total population

Between 18 to 29- 43%

Between 30 to 64- 56%

64 or older- 1%

In the month of January using the Average Daily Population above of 156 inmates; then on any given day we could expect that our inmate ethnicity and age of inmates would consist of –

100 Caucasian Inmates

36 Black Inmates

7 Hispanic Inmates

11 Native American Inmates

2 Asian Inmates

67 Inmates between the ages of 18-29

87 Inmates between the ages of 30-64

1 Inmate 64 years of age or older

**February 2005**

Total # of Bookings – 412 Inmates (322 male, 90 female)

Average Daily Population- 149 inmates

Average Population of males- 130 inmates

Average Population of females- 19 inmates

Peak Daily Population- 165

Ethnicity breakdown based on Average Daily Population-

Caucasian- 65%

Black- 21%

Hispanic- 4%

Native American- 8%

Asian- 2%

Other- 0%

Age of total population

Between 18 to 29- 41%

Between 30 to 64- 58%

64 or older- 1%

In the month of February using the Average Daily Population above of 149 inmates; then on any given day we could expect that our inmate ethnicity and age of inmates would consist of –

97 Caucasian Inmates

32 Black Inmates

6 Hispanic Inmates

12 Native American Inmates

2 Asian Inmates

61 Inmates between the ages of 18-29

87 Inmates between the ages of 30-64

1 Inmate 64 years of age or older

**March 2005**

Total # of Bookings – 542 Inmates (425 male, 117 female)

Average Daily Population- 147 inmates

Average Population of males- 124 inmates

Average Population of females- 23 inmates

Peak Daily Population- 162

Ethnicity breakdown based on Average Daily Population-

Caucasian- 67%

Black- 20%

Hispanic- 3%

Native American- 8%

Asian- 2%

Other- 0%

Age of total population

Under 18- 1%

Between 18 to 29- 40%

Between 30 to 64- 58%

64 or older- 1%

In the month of March using the Average Daily Population above of 147 inmates; then on any given day we could expect that our inmate ethnicity and age of inmates would consist of –

99 Caucasian Inmates

29 Black Inmates

5 Hispanic Inmates

12 Native American Inmates

2 Asian Inmates

1 Inmate under 18

60 Inmates between the ages of 18-29

85 Inmates between the ages of 30-64

1 Inmate 64 years of age or older

**April 2005**

Total # of Bookings – 539 Inmates (428 male, 111 female)

Average Daily Population- 158 inmates

Average Population of males- 135 inmates

Average Population of females- 23 inmates

Peak Daily Population- 169

Ethnicity breakdown based on Average Daily Population-

Caucasian- 60%

Black- 25%

Hispanic- 4%

Native American- 9%

Asian- 2%

Other- 0%

Age of total population

Between 18 to 29- 43%

Between 30 to 64- 56%

64 or older- 1%

In the month of April using the Average Daily Population above of 158 inmates; then on any given day we could expect that our inmate ethnicity and age of inmates would consist of –

96 Caucasian Inmates

40 Black Inmates

6 Hispanic Inmates

14 Native American Inmates

2 Asian Inmates

67 Inmates between the ages of 18-29

89 Inmates between the ages of 30-64

2 Inmate 64 years of age or older

**May 2005**

Total # of Bookings –556 Inmates (432 male, 124 female)

Average Daily Population- 170 inmates

Average Population of males- 144 inmates

Average Population of females- 26 inmates

Peak Daily Population- 186

Ethnicity breakdown based on Average Daily Population-

Caucasian- 59%

Black- 26%

Hispanic- 4%

Native American- 10%

Asian- 1%

Other- 0%

Age of total population

Between 18 to 29- 47%

Between 30 to 64- 52%

64 or older- 1%

In the month of May using the Average Daily Population above of 170 inmates; then on any given day we could expect that our inmate ethnicity and age of inmates would consist of –

100 Caucasian Inmates

44 Black Inmates

7 Hispanic Inmates

18 Native American Inmates

1 Asian Inmates

80 Inmates between the ages of 18-29

89 Inmates between the ages of 30-64

1 Inmate 64 years of age or older

**June 2005**

Total # of Bookings – 477 Inmates (384 male, 93 female)

Average Daily Population- 175 inmates

Average Population of males- 151 inmates

Average Population of females- 24 inmates

Peak Daily Population- 191

Ethnicity breakdown based on Average Daily Population-

Caucasian- 59%

Black- 26%

Hispanic- 6%

Native American- 8%

Asian- 1%

Other- 0%

Age of total population

Between 18 to 29- 46%

Between 30 to 64- 54%

64 or older- 0%

In the month of June using the Average Daily Population above of 175 inmates; then on any given day we could expect that our inmate ethnicity and age of inmates would consist of –

104 Caucasian Inmates

46 Black Inmates

10 Hispanic Inmates

14 Native American Inmates

1 Asian Inmates

80 Inmates between the ages of 18-29

94 Inmates between the ages of 30-64

1 Inmate 64 years of age or older

**July 2005**

Total # of Bookings – 505 Inmates (393 male, 112 female)

Average Daily Population- 177 inmates

Average Population of males- 150 inmates

Average Population of females- 27 inmates

Peak Daily Population- 184

Ethnicity breakdown based on Average Daily Population-

Caucasian- 60%

Black- 25%

Hispanic- 7%

Native American- 7%

Asian- 1%

Other- 0%

Age of total population

Between 18 to 29- 42%

Between 30 to 64- 58%

64 or older- 0%

In the month of July using the Average Daily Population above of 177 inmates; then on any given day we could expect that our inmate ethnicity and age of inmates would consist of –

106 Caucasian Inmates

44 Black Inmates

12 Hispanic Inmates

13 Native American Inmates

2 Asian Inmates

75 Inmates between the ages of 18-29

102 Inmates between the ages of 30-64

0 Inmate 64 years of age or older

**August 2005**

Total # of Bookings – 492 Inmates (375 male, 117 female)

Average Daily Population- 162 inmates

Average Population of males- 140 inmates

Average Population of females- 22 inmates

Peak Daily Population- 184

Ethnicity breakdown based on Average Daily Population-

Caucasian- 63%

Black- 23%

Hispanic- 6%

Native American- 6%

Asian- 2%

Other- 0%

Age of total population

Between 18 to 29- 42%

Between 30 to 64- 58%

64 or older- 0%

In the month of August using the Average Daily Population above of 162 inmates; then on any given day we could expect that our inmate ethnicity and age of inmates would consist of –

102 Caucasian Inmates

38 Black Inmates

10 Hispanic Inmates

10 Native American Inmates

2 Asian Inmates

68 Inmates between the ages of 18-29

94 Inmates between the ages of 30-64

0 Inmate 64 years of age or older

**September 2005**

Total # of Bookings – 528 Inmates (407 male, 121 female)

Average Daily Population- 172 inmates

Average Population of males- 147 inmates

Average Population of females- 25 inmates

Peak Daily Population- 198

Ethnicity breakdown based on Average Daily Population-

Caucasian- 65%

Black- 22%

Hispanic- 5%

Native American- 8%

Asian- 0%

Other- 0%

Age of total population

Between 18 to 29- 45%

Between 30 to 64- 53%

64 or older- 2%

In the month of September using the Average Daily Population above of 172 inmates; then on any given day we could expect that our inmate ethnicity and age of inmates would consist of –

111 Caucasian Inmates

36 Black Inmates

8 Hispanic Inmates

15 Native American Inmates

2 Asian Inmates

78 Inmates between the ages of 18-29

92 Inmates between the ages of 30-64

2 Inmate 64 years of age or older

**October 2005**

Total # of Bookings – 479 Inmates (374 male, 105 female)

Average Daily Population- 169 inmates

Average Population of males- 145 inmates

Average Population of females- 24 inmates

Peak Daily Population- 180

Ethnicity breakdown based on Average Daily Population-

Caucasian- 65%

Black- 22%

Hispanic- 4%

Native American- 8%

Asian- 1%

Other- 0%

Age of total population

Between 18 to 29- 50%

Between 30 to 64- 49%

64 or older- 1%

In the month of October using the Average Daily Population above of 169 inmates; then on any given day we could expect that our inmate ethnicity and age of inmates would consist of –

110 Caucasian Inmates

36 Black Inmates

7 Hispanic Inmates

13 Native American Inmates

3 Asian Inmates

85 Inmates between the ages of 18-29

83 Inmates between the ages of 30-64

1 Inmate 64 years of age or older

## November 2005

Total # of Bookings –458 Inmates (372 male, 86 female)

Average Daily Population- 171 inmates

Average Population of males- 150 inmates

Average Population of females- 21 inmates

Peak Daily Population- 190

Ethnicity breakdown based on Average Daily Population-

Caucasian- 63%

Black- 24%

Hispanic- 4%

Native American- 7%

Asian- 1%

Other- 1%

Age of total population

Between 18 to 29- 51%

Between 30 to 64- 48%

64 or older- 1%

In the month of November using the Average Daily Population above of 171 inmates; then on any given day we could expect that our inmate ethnicity and age of inmates would consist of –

108 Caucasian Inmates

41 Black Inmates

7 Hispanic Inmates

12 Native American Inmates

2 Asian Inmates

1 Other

87 Inmates between the ages of 18-29

83 Inmates between the ages of 30-64

1 Inmate 64 years of age or older

## December 2005

Total # of Bookings – 460 Inmates (365 male, 95 female)

Average Daily Population- 154 inmates

Average Population of males- 139 inmates

Average Population of females- 15 inmates

Peak Daily Population- 165

Ethnicity breakdown based on Average Daily Population-

Caucasian- 66%

Black- 26%

Hispanic- 5%

Native American- 5%

Asian- 0%

Other- 2%

Age of total population

Between 18 to 29- 51%

Between 30 to 64- 49%

64 or older- 0%

In the month of December using the Average Daily Population above of 154 inmates; then on any given day we could expect that our inmate ethnicity and age of inmates would consist of –

101 Caucasian Inmates

35 Black Inmates

7 Hispanic Inmates

7 Native American Inmates

1 Asian Inmates

3 Other

78 Inmates between the ages of 18-29

75 Inmates between the ages of 30-64

1 Inmate 64 years of age or older

## Yearly 2005

2005 Average Daily Population using the average numbers listed previously comes out to be 163.  
Break that down further 141 were male and 22 were female.

Peak Daily Population – 198 inmates in September

198 x 10% for classification movement= 218    218 x 10% for weekend bookings= 240 inmates

Our max bed space is 191 [51 work release/minimum, 28 female, 28 minimum, 56 medium, 28 maximum]

**Our facility at year end of 2005 is short 46 beds.**

Total bookings for the year were 5892.

Ethnicity breakdown based on Average Daily Population-

Caucasian- 63%

Black- 24%

Hispanic- 7%

Native American- 5%

Asian- 1%

Other- 0%

Age of total population

Between 18 to 29- 46%

Between 30 to 64- 54%

In the year 2005 using the Average Daily Population above of 163 inmates; then on any given day we could expect that our inmate ethnicity and age of inmates would consist of –

103 Caucasian Inmates

38 Black Inmates

8 Hispanic Inmates

12 Native American Inmates

2 Asian Inmates

74 Inmates between the ages of 18-29

88 Inmates between the ages of 30-64

1 Inmate 64 years of age or older



See supporting charts-

*2005 Monthly Bookings*

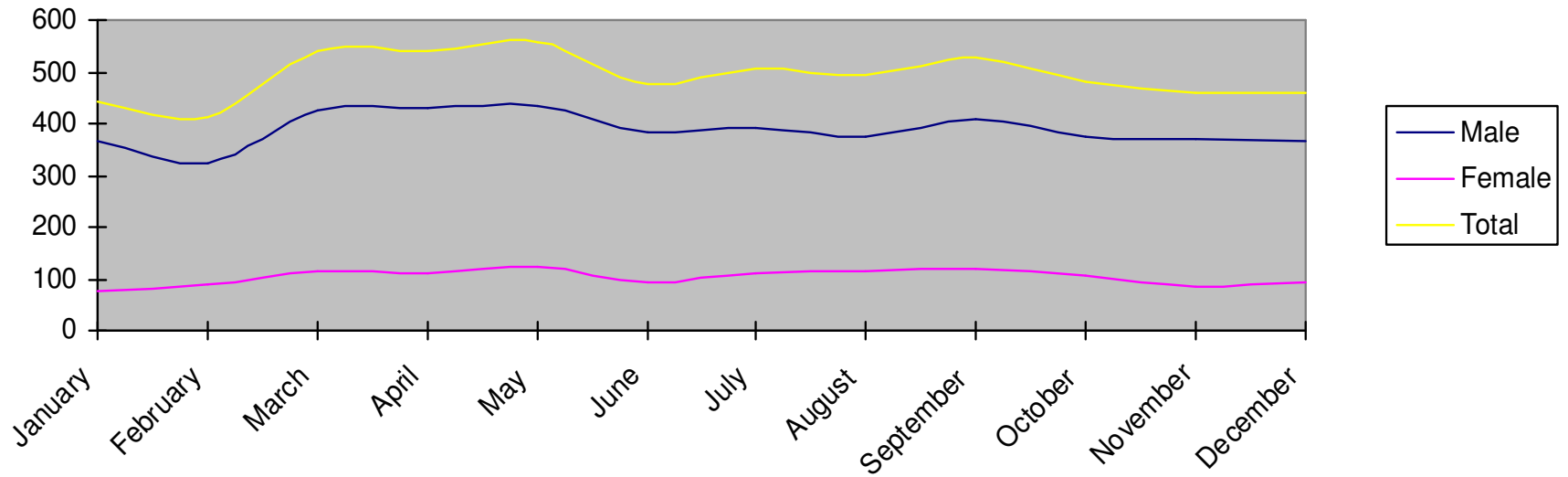
*2005 Average Daily Jail Population*

*Peak Population Numbers 2005*

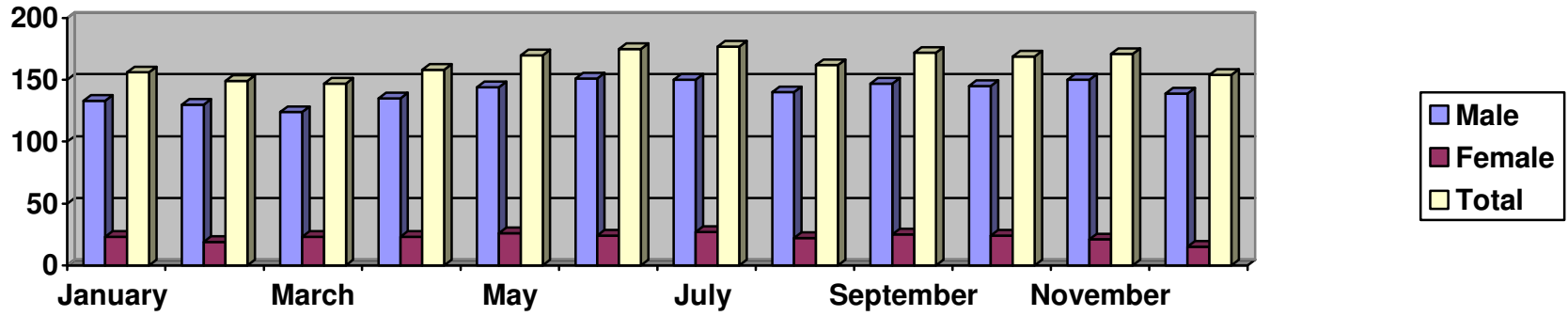
*2005 Ethnicity break down based on Average Daily Jail Population*

[Statistics taken from "Jalan" monthly reports - "Population Accounting Form-B. Demographics", "County Population Report", and "Booking per day Report provided by Kimberley Smoots]

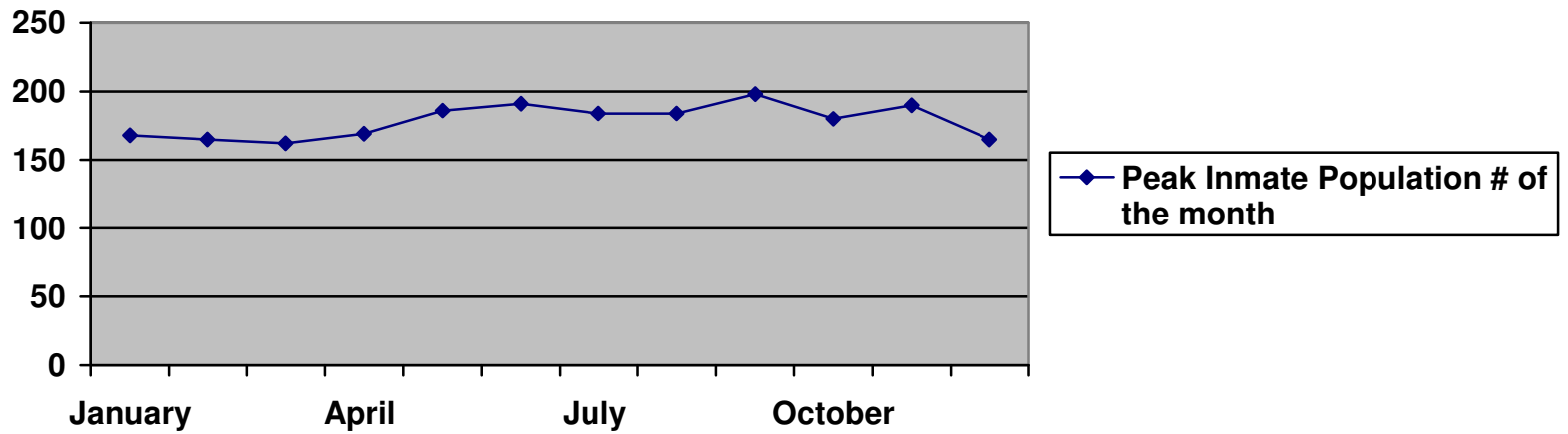
### Douglas County Sheriff's Office Jail Division 2005 Monthly Bookings



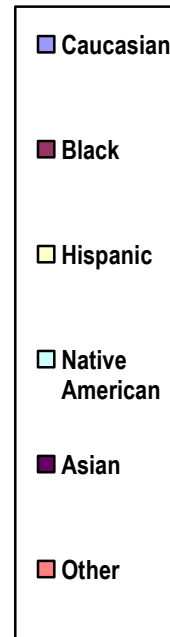
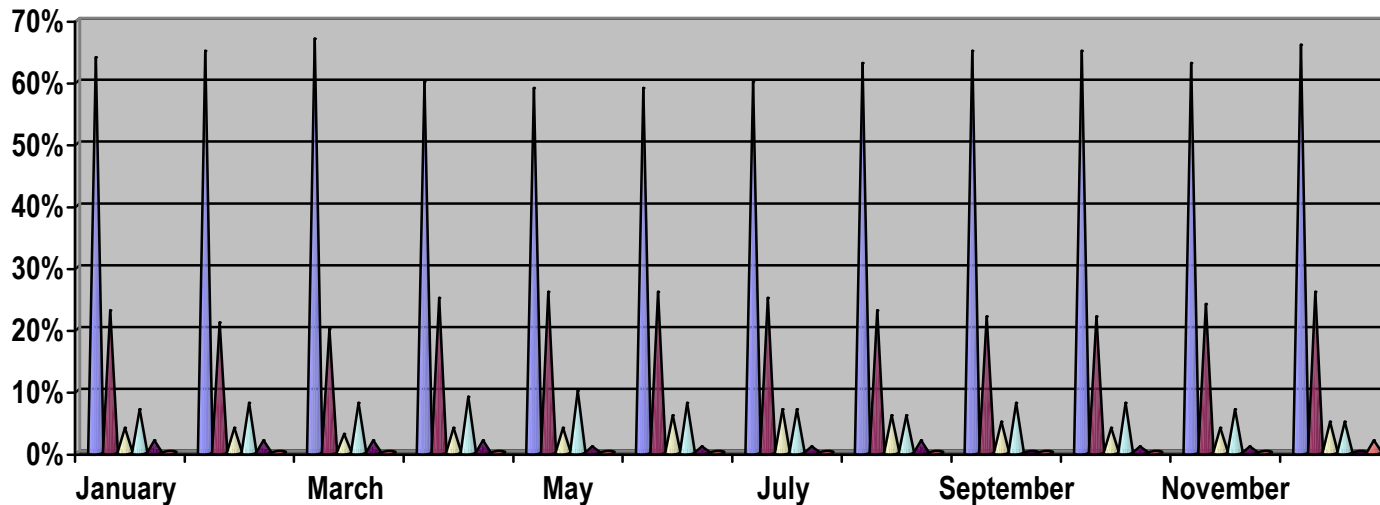
Douglas County Sheriff's Office  
 Jail Division  
 2005 Average Daily Jail Population



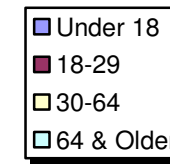
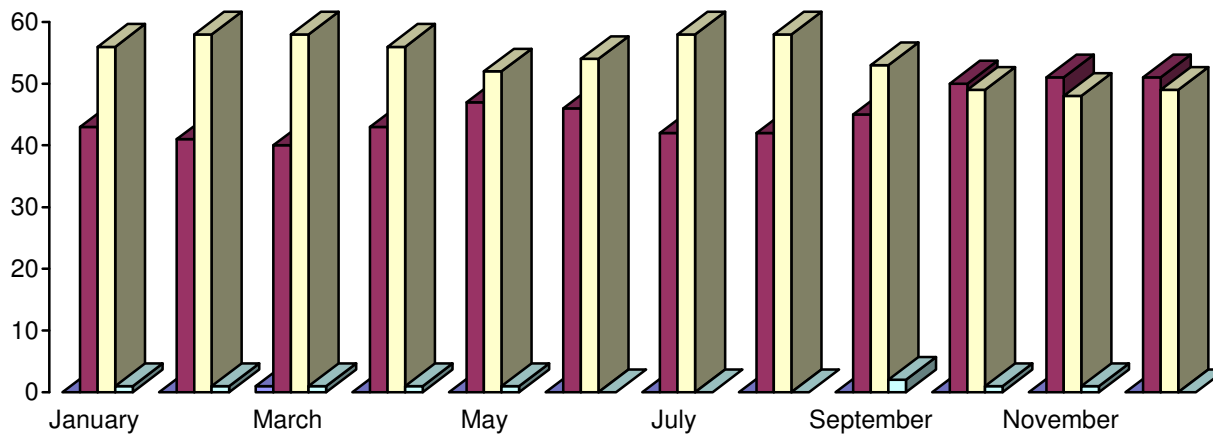
Peak Population Numbers 2005



Douglas County Sheriff's Office  
Jail Division  
2005 Ethnicity break down based on Average Daily Jail Population



Douglas County Sheriff's Office  
Jail Division  
2005 Age Breakdown Based on Average Daily Population of Inmates



**Kitchen Costs 2005** [Statistics taken from Linda Grant, CDM CFPP, Monthly Excel Kitchen and Food Costs Breakdown Report]

Total Costs of groceries, paper goods and cleaning supplies- \$263,708.34

Total Meals served- 185,926

Total Costs divided by Total Meals= \$1.42 average cost for each meal (A savings of \$0.15 per meal over last year's figure)

---

**Jail Medical Activity 2005**

Daily Clinic- 3376

Physicals- 585

Dr. Clinic- 59

Questions- 2358

Lab- 131

**Jail Medical Activity, Out of Facility 2005**

X-Ray-23

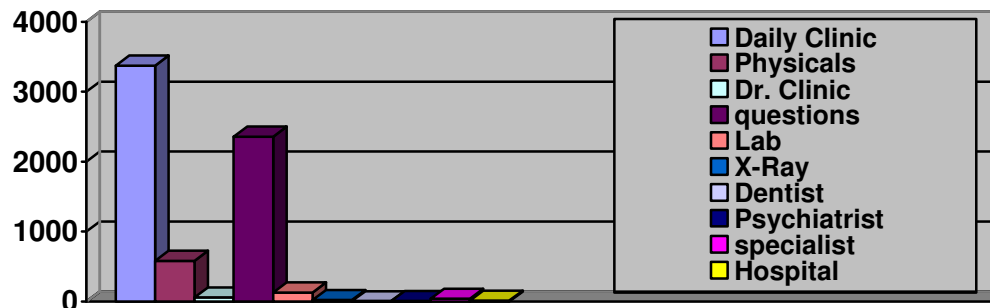
Dentist- 7

Psychiatrist- 10

Specialist- 42

Hospital- 13

**Jail Inmate Medical Care Statistics 2005**



[Statistics taken from VNA Monthly Health Care Services Log, provided by VNA Nurses and Kimberley Smoots]

**2005**

**1<sup>st</sup> Quarter Statistics on Mental Health/Bert Nash in Douglas County Jail**

**1/1/05 thru 3/31/05**

**MHV**- Mental Health Visits – **190** entries

**GHV** - Mental Health Group Visits – **12** groups reported – **76** entries

**CM** - Case Management- **18** entries- helping **8** inmates

**CO** - Close Observation Level 1 Watch – **2** reported – compiled length of officer time dedicated to watches- **2 days 3 hours**.

**SF** – Safety Cell Level 2 Watch – **2** reported – compiled length of officer time dedicated to watches- **1 day 1 hour**.

**SW**- Suicide Watch Level 3 Watch – **2** reported – compiled length of officer time dedicated to watches – **11 days 17 hours**.

**MS**- Jail Screen – **3** reported – Compiled length of screens by Bert Nash screeners- **2 hours 57 minutes**

**RS** – Reform Screen – **1** reported – Length of screen by Bert Nash screener- **2 hours**

Reported - **1** Inmate sent to Osawatomie Hospital on involuntary commit.

**PSY**- Psychiatrist Visits – **5** reported – length of time unknown

*Information gathered by entries in Mental Health Log Book and “Jalan” reports – Prisoner Activity logs for each code highlighted in red from 1/1/05 thru 3/31/05 gathered and provided by Kimberley Smoots.*

*Statistical reporting for most codes were not decided on until late February – Some reporting may have been missed due to this, mental health visits are probably most accurate – entries were reviewed back to 1/1/05.*

**2005**

**2nd Quarter Statistics on Mental Health/Bert Nash in Douglas County Jail**

**4/1/05 thru 6/30/05**

**MHV**- Mental Health Visits – **182** entries

**GHV** - Mental Health Group Visits – **20** groups reported – **137** entries- total of 1 hour and 15 minutes for each group= 1500 minutes = **25 hours** of Emotional Coping Skills Groups

**CM** - Case Management- **52** entries

**CO** - Close Observation Level 1 Watch – **12** reported – compiled length of officer time dedicated to watches- **289.5 hours** – approx **12 days**

**SF** – Safety Cell Level 2 Watch – **12** reported – compiled length of officer time dedicated to watches- **198 hours**- approx **8 days**

**SW**- Suicide Watch Level 3 Watch – **17** reported – compiled length of officer time dedicated to watches – **666.5 hours** – approx **28 days**

**MS**- Jail Screen – **11** reported – Compiled length of screens by Bert Nash screeners- **10.5 hours**

**RS** – Reform Screen – **2** reported – Length of screen by Bert Nash screener- **4.5 hours**

Reported - **1** Inmate sent to Osawatomie Hospital on involuntary commit.

**1** Inmate sent to Larned per court papers due to reform screen.

**PSY**- Psychiatrist Visits – **2** reported – length of time unknown

*Information gathered by entries in Mental Health Log Book and “Jalan” reports – Prisoner Activity logs for each code highlighted in red from 4/1/05 thru 6/30/05 gathered and provided by Kimberley Smoots.*

*Reminder*

*Statistical reporting for most codes were not decided on until late February- this report should vary from the 1<sup>st</sup> quarter- as better tracking is more accurate.*

**2005**

**3rd Quarter Statistics on Mental Health/Bert Nash in Douglas County Jail**

**6/30/05 thru 9/30/05**

**MHV**- Mental Health Visits – **155** entries

**GHV** - Mental Health Group Visits – **23** groups reported – **147** entries- total of 1 hour and 15 minutes for each group= 1725 minutes = **28.75 hours** of Emotional Coping Skills Groups

**CM** - Case Management- **46** entries

**CO** - Close Observation Level 1 Watch – **9** reported – compiled length of officer time dedicated to watches- **191.50hours** – **approx 8 days**

**SF** – Safety Cell Level 2 Watch – **8** reported – compiled length of officer time dedicated to watches- **376 hours**- **approx 15 and a half days**

**SW**- Suicide Watch Level 3 Watch – **7** reported – compiled length of officer time dedicated to watches – **823.5 hours** – **approx 34 days**

**MS**- Jail Screen – **11** reported – Compiled length of screens by Bert Nash screeners- **18.75 hours**

**RS** – Reform Screen – **4** reported – Length of screen by Bert Nash screener- **7 hours and 45 minutes**

Reported - **4** Inmate sent to Osawatomie Hospital on involuntary commit.

**PSY**- Psychiatrist Visits – **0** reported – length of time unknown

**IFC**- Intake for Center-0

*Information gathered by entries in Mental Health Log Book and “Jalan” reports – Prisoner Activity logs for each code highlighted in red from 7/1/05 thru 9/30/05 gathered and provided by Kimberley Smoots.*

*Reminder*

*Statistical reporting for most codes were not decided on until late February- this report should vary from the 1<sup>st</sup> quarter- as better tracking is more accurate.*

**2005**

**4th Quarter Statistics on Mental Health/Bert Nash in Douglas County Jail**

**10/1/05 thru 12/31/05**

**MHV**- Mental Health Visits – **235** entries

**GHV** - Mental Health Group Visits – **7** groups reported – **38** entries- total of 1 hour and 15 minutes for each group= 525 minutes = **8.75 hours** of Emotional Coping Skills Groups

**CM** - Case Management- **62** entries

**CO** - Close Observation Level 1 Watch – **14** reported – compiled length of officer time dedicated to watches- **437 hours** – approx **18 days**

**SF** – Safety Cell Level 2 Watch – **10** reported – compiled length of officer time dedicated to watches- **271 hours**- approx **11 days**

**SW**- Suicide Watch Level 3 Watch – **11** reported – compiled length of officer time dedicated to watches – **823.5 hours** – approx **34 days**

**MS**- Jail Screen – **11** reported – Compiled length of screens by Bert Nash screeners- **18.75 hours**

**RS** – Reform Screen – **6** reported – Length of screen by Bert Nash screener- **10 hours**

Reported - **6** Inmates sent to Osawatomie Hospital on involuntary commit.

**PSY**- Psychiatrist Visits – **0** reported – length of time unknown

**IFC**- Intake for Center- **1**

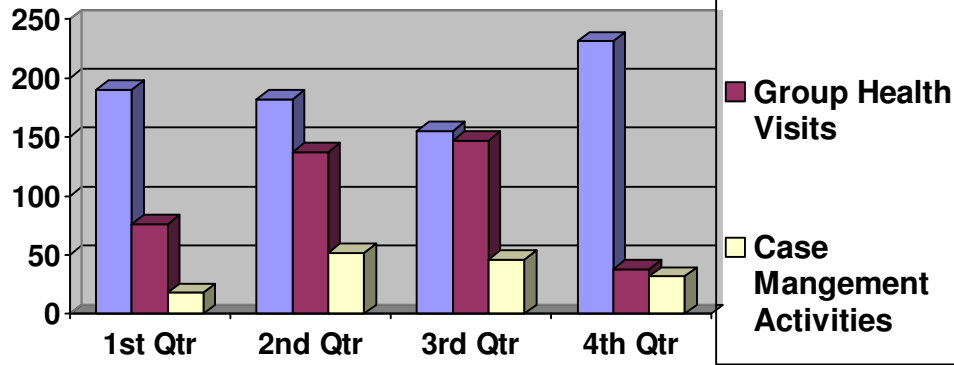
*Information gathered by entries in Mental Health Log Book and “Jalan” reports – Prisoner Activity logs for each code highlighted in red from 10/1/05 thru 12/31/05 gathered and provided by Kimberley Smoots.*

*Reminder*

*Statistical reporting for most codes were not decided on until late February- this report should vary from the 1<sup>st</sup> quarter- as better tracking is more accurate.*



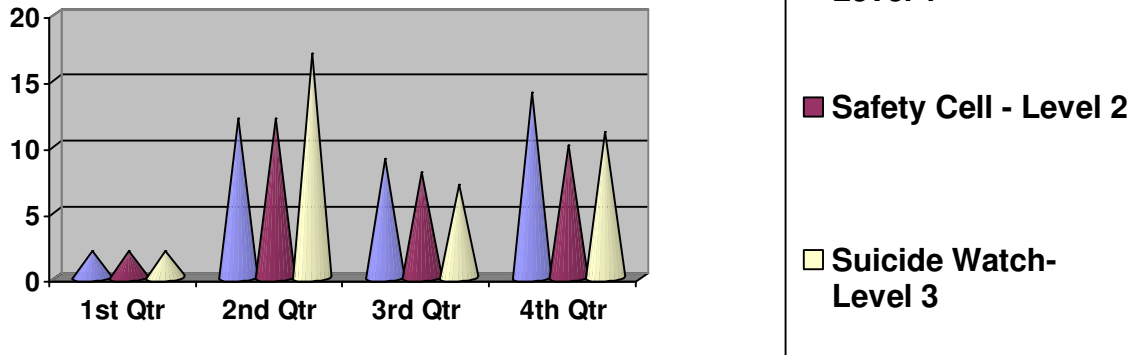
### Day to Day Mental Health- Comparison of 2005 Quarters



Information gathered by entries in Mental Health Log Book and "Jalan" reports – Prisoner Activity logs 1/1/05 thru 12/31/05 gathered and provided by Kimberley Smoots.

Statistical reporting for most codes were not decided on until late February – Some reporting may have been missed due to this, mental health visits are probably most accurate – entries were reviewed back to 1/1/05. (More accurate reporting tracking is/was done in 2<sup>nd</sup>, 3<sup>rd</sup> & 4<sup>th</sup> Quarters)

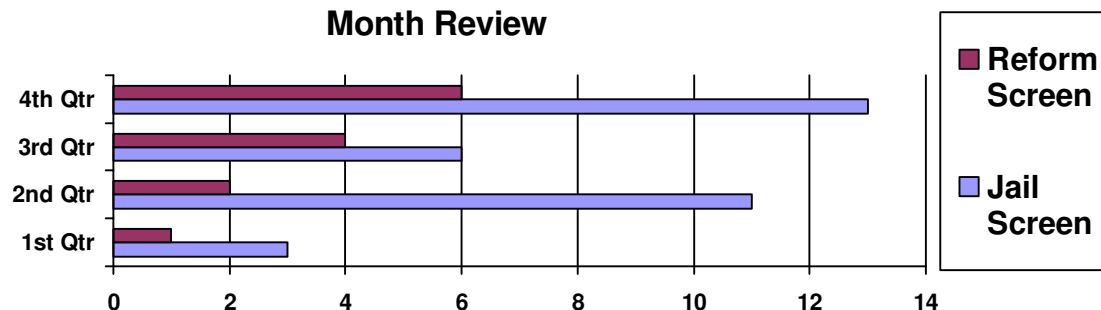
### Mental Health Watches- Comparison of 2005- Quarters



Information gathered by entries in Mental Health Log Book and "Jalan" reports – Prisoner Activity logs 1/1/05 thru 12/31/05 gathered and provided by Kimberley Smoots.

Statistical reporting for most codes were not decided on until late February – Some reporting may have been missed due to this, mental health visits are probably most accurate – entries were reviewed back to 1/1/05. (More accurate reporting tracking is/was done in 2<sup>nd</sup> and 3<sup>rd</sup> Quarters )

## Mental Health Screens- Comparison of 2005- Quarters/ 6 Month Review



Information gathered by entries in Mental Health Log Book and "Jalan" reports – Prisoner Activity logs 1/1/05 thru 12/31/05 gathered and provided by Kimberley Smoots.

Statistical reporting for most codes were not decided on until late February – Some reporting may have been missed due to this, mental health visits are probably most accurate – entries were reviewed back to 1/1/05. (More accurate reporting tracking is/was done in 2<sup>nd</sup> and 3<sup>rd</sup> Quarters)

## Inmate Worker Program 2005

63 Inmates participated in the inmate worker program in 2005: **55 males and 8 females.**

Inmate time credit was given **31 times by the courts.**

Ethnicity breakdown was **42 White, 14 Black and 7 Native American.**

Total # of days worked by all inmates in the worker program was **4,179.**

Total Days worked 4,179 x 8 hours a day= 33,432 x \$7.00 an hour = **\$234,024.00 in savings.**

Inmate Workers work an estimated 8 hours a day and work 7 days a week. If you divided the days worked 4,179 by 365 days a year- then these 63 inmates who participated in the worker program saved us from having to hire 11.5 employees to cover housekeeping and kitchen duties.

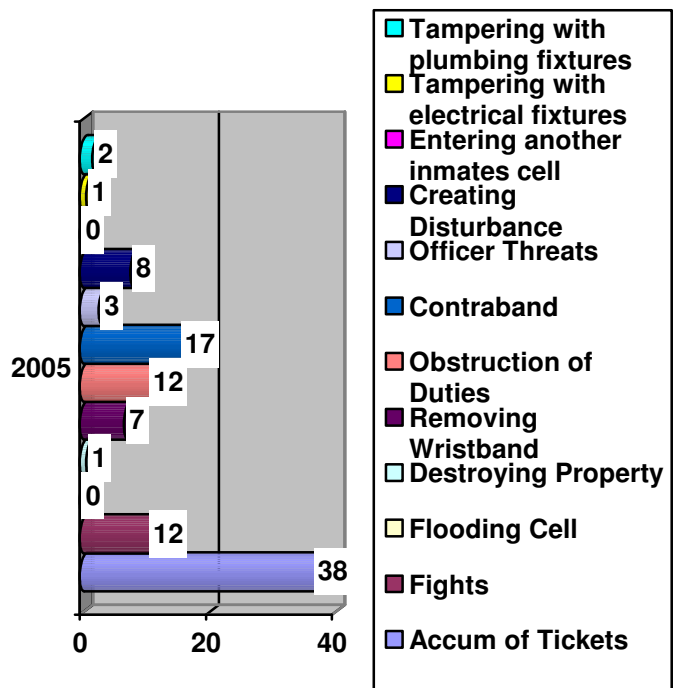
[Statistics taken from 2005 Inmate Worker Database entered by Sgt. Spurling, calculated by Kimberley Smoots]

## Disciplinary Hearings 2005

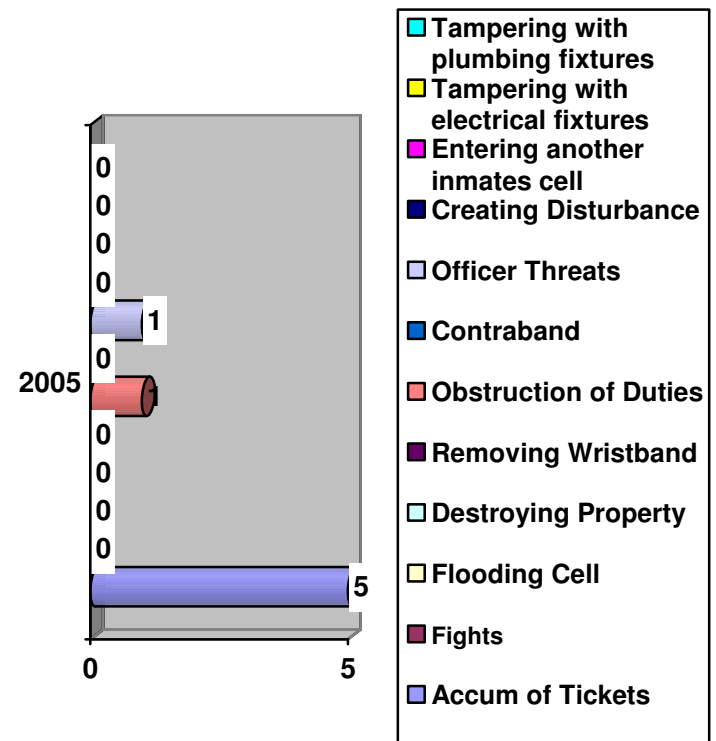
Below are Statistics on Disciplinary Hearings which are part of the classification and direct supervision concept. When looking at these numbers, please keep in mind that under “fights”, this number looks high because under most circumstances each inmate involved in one fight will have a disciplinary hearing. Example: 3 inmates involved in one fight = 3 separate disciplinary hearings. This number does not reflect how many fights that actually happened.

[Information provided by Lt. Dillon, gathered from Jail Reports, Disciplinary Tickets and Disciplinary Hearing results, see supporting charts; Male – Disciplinary Hearings 2005, Female – Disciplinary Hearings 2005 ]

Male - Disciplinary Hearings 2005



Female- Disciplinary Hearings 2005



## 2005 –Jail Overtime Breakdown

Totals 1/1/05 through 12/30/05 – 26 pay periods

Jail- (SS) Short Staffed- 6692

Report and Paperwork (RP)- 316.25

Late call(LC)- 3.5

Training (TR)- 2275.25

Transports (PT)- 536.25

Building Maintenance (BM)- 70

KLETC Training- 684

Meetings (MT)- 274.75

Hiring Boards (OT)- 9

Promotional Boards (OT)- 9.5

DCT Call Out (SE)- 98.25

DCT Training (TR)- 522.50

Court Security (CT)- 13.5

Investigations (IN)- 115

Information Technology (IT)- 16.75

Process Service (PS)- 0

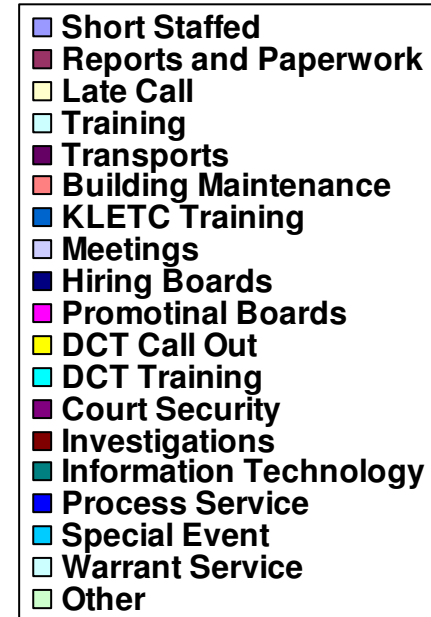
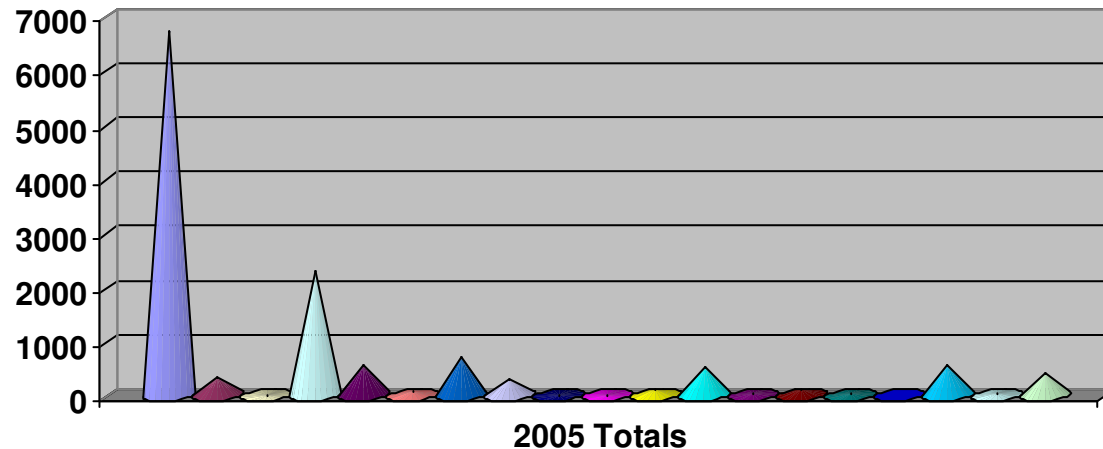
Special Event (SE)-335.50

Warrant Service (WS)- 30.28

Other (OT)- 391

**Total – 12,642**

### Overtime Breakdown



[Information provided by Lt. Dillon and Kimberley Smoots, gathered from time sheets and calculated on 2005 Jail Overtime spreadsheet]

## 2005 –Work Release Program

### 2005-Work Release Program / 12 Month Totals:

#### Number of inmates on Work Release:

12 month Average (Mon through Friday):	12.02
12 month Average (Sat and Sundays):	10.45
High Week Average:	19.2
Low Week Average:	8.8
High Weekend Average:	16.5
Low Weekend Average:	5.0

**Work Site Visits (WSV)** - 849 times the Jail (Sgt. Al Deathe) made contact with the inmate at their work site.

*\*Work Site Visits were originated on 03/17/05. No entries were made into Jalan prior to this date*

**Work Rel. Calls (WRC)**- 671 times inmates contacted the Jail reference change of location or some other factor that affected their work release.

*\*Work Release Calls were originated on 07/29/05, none were entered into Jalan prior to that date*

**Work Rel. Vio. (WRV)**- 20 times inmates violated the terms of their work release agreement and had their work release revoked.

*\*Work Release Violation entries into Jalan started on 04/14/05, none were made prior to this date*

**Urine Analysis (UA)** - 185 times inmates were tested for THC, Opiates, Meth and Cocaine.

22 tested positive: 18 were for THC

1 THC and Opiates

1 Opiates

2 Cocaine

16 positive test were during the 2<sup>nd</sup> Quarter

5 positive test were during the 3<sup>rd</sup> Quarter

1 positive test were during the 4<sup>th</sup> Quarter

*\* 7 of the 185 tests were done were due to repeat offenders, test was done using quantitative test to assure the levels of THC were dropping each time they were tested.*

*\* Urine Analysis entries into Jalan started 03/17/05; no entries were made prior to this date.*

**Port. Breath Test (PBT)** - 253 times portable breath test were performed on inmates on work release:

7 times test were positive for alcohol

3 of the 7 times tests were non work release related.

*\*Portable Breath Test entries into Jalan started on 04/14/05, none were made prior to this date*

*[Information gathered by entries in "Jalan" reports- Prisoner Activity logs dated using dates above information gathered from time Sgt. Deathe who was assigned W/R full time 3/17/05]*

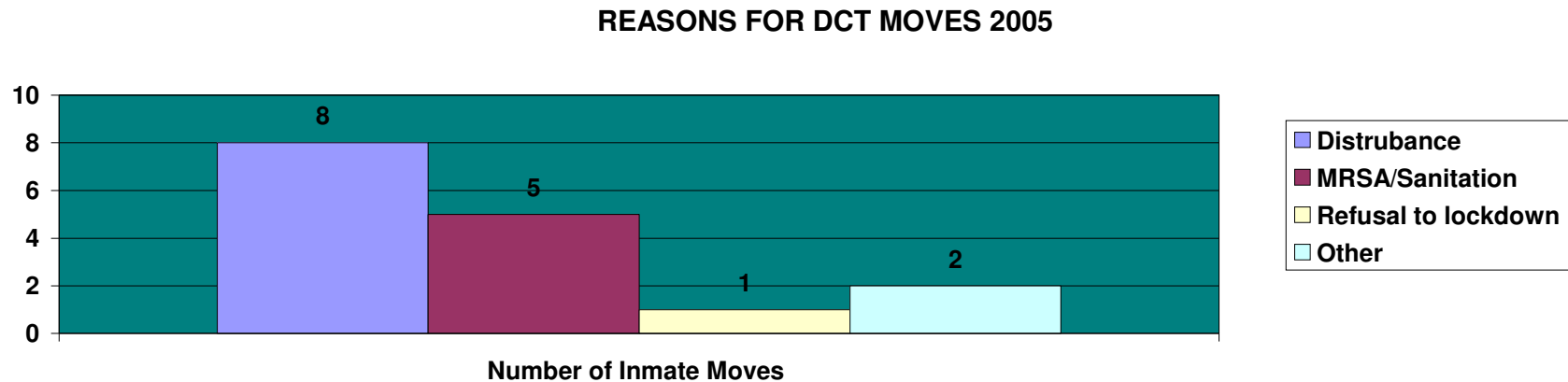
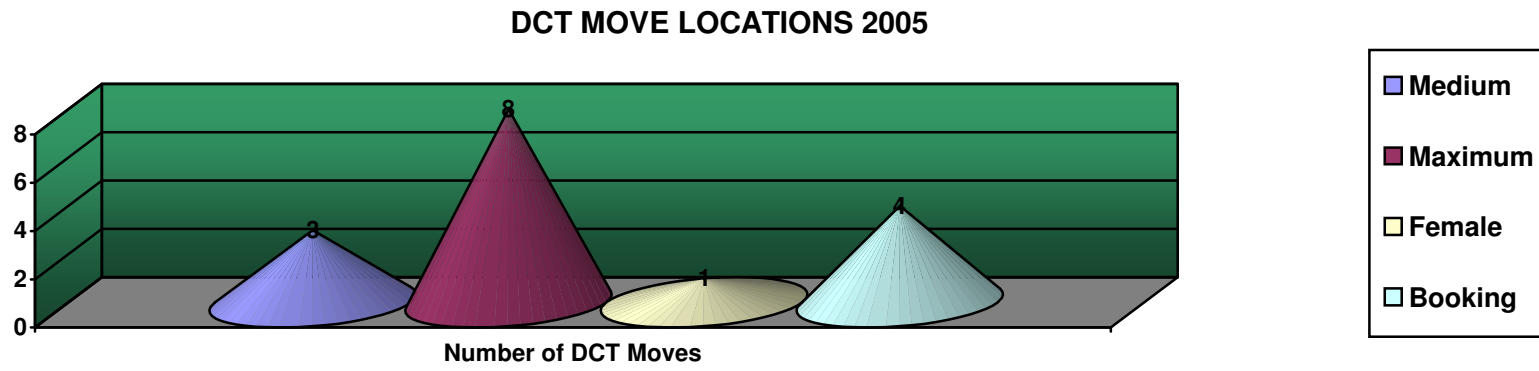
## Disturbance Control Team Statistics 2005

Number of DCT calls outs – 16

Out of that 16 only 7 inmates were compliant.

Out of that 16- 15 were male and 1 was female

Out of that 16- 3 were white and 13 were black



*[Information provided by Kimberley Smoots, gathered from DCT Call Forms filled out by Shift Supervisor and DCT Commander which are entered into a database to gather statistics, see supporting charts; DCT Move Location, Reasons for DCT Moves ]*

## Cost of Overcrowding- Housed Out Inmates 2005

Month	Number of Inmates "Housed Out"	Total Days	Total Cost
January	5	126	\$5985.00
February	2	31	\$1472.50
May	8	133	\$6317.50
July	6	179	\$8502.50
August	4	115	\$5462.50
September	7	84	\$3990.00
October	9	154	\$7315.00
November	6	134	\$6365.00
December	4	20	\$950.00
			<b>\$46,360.00</b>

Budget line item #69037 Prisoner Housing was Budgeted at \$147,500.00 – Approximately \$100,000 was not spent from the budget by housing prisoners in house.

*[Information provided by Kimberley Smoots, gathered from Atchison County and Jefferson County Prisoner Bills, Medical Costs are not calculated]*



## 2005 Statistical Overview

Inmate Population numbers are continuing to rise causing a severe strain on the facility and its staff. The renovation of the Work Release unit has helped us curb the “Out of County” housing costs, but is just a temporary remedy for the current overcrowding situation.

Our facility needs a 10% bed space buffer within the current population so that our classification process can work properly. This classification buffer will ensure that inmates are placed in the correct classification and that there is movement for behavior changes and due process.

Our facility also needs a 10% bed space buffer within the current population to facilitate high weekend numbers. When looking at population trends the highest bookings occur on weekends. Our facility needs this preclassification buffer for those inmates staying only a few hours and or a few days before court.

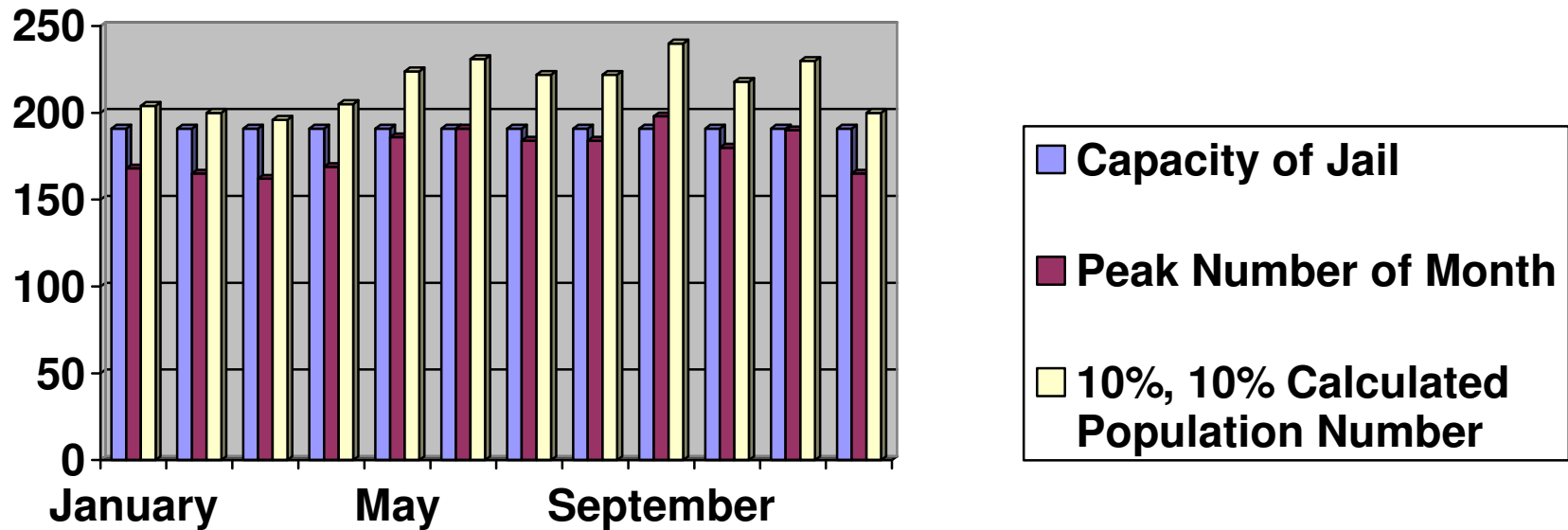
The highest peak population number for 2005 was 198 inmates in the month of September. Calculating the classification bed space buffer needed along with weekend/preclassification bed space buffer needed makes the inmates needed bed space number rise to 240.

Our facilities capacity is 191[51 work release/minimum, 28 female, 28 minimum, 56 medium, 28 maximum] - using the previous calculation this makes our facility at year end of 2005 short 46 beds.

Calculating the peak numbers, still using the 10% classification buffer and 10% weekend preclassification buffer, of each month –estimates 12 months out of the year 2005 that the facility was beyond its bed space capacity of 191(See Population Comparison 2005 chart). The actual 191 capacity was exceeded by peak numbers without the 10%, 10% calculation in one month of the year and matched in another.

In review, the chart on the next page shows that the Douglas County facility is currently at or beyond its capacity. If more bed space is not added our classification process will suffer causing our security to be at risk and our weekend/preclassification inmates will be housed in booking until court because of population overflow.

## POPULATION COMPARISON 2005



[Statistics taken from "Jalan" monthly reports - "Population Accounting Form-B. Demographics"]

Possible remedies to this situation besides expansion/construction –

Remedy number 1- Discontinuing the work release unit and use of this pod for minimum classification security inmates. This scenario will add 51 beds. Due to rising numbers this will also only place a band aid on the situation- as we only have 5 beds extra if we use our current peak calculation number of 240.

Remedy number 2 – Focus on “re-entry programs” so that frequent inmates are no longer entering the jail. This requires support from community and courts as well as jail staff. Numbers provided in this report do not suggest that this scenario will decrease our population but do suggest that our focus should be on the majority population- most inmates held in our custody are white males, between the ages of 18 to 64.

Remedy number 3- Short Term Commitments being assigned to Community Corrections by courts instead of sentenced to a jail setting. Due to “Jalan” entry being incapable of distinguishing regular inmates and short term commitments, the number of those who would not be sentenced to jail may be too few to make a difference in decreasing our population.

Remedy number 4- Faster paperwork turn around by court. Paperwork turnaround process for inmates who have been sentenced to prison is lengthy. While pondering the 2005 overcrowding issue, a random day was selected in the year of 2006 – 1/18/06 to examine the total number of inmates that were being held at our facility awaiting Journal Entry paperwork from the courts so that they could be transferred to KDOC (Kansas Department of Corrections). The number of days since their final sentencing up to 1/18/06 (or paperwork delivery date) was calculated for each of the inmates. The total number of inmates was 23 – totaling 1,413 days of waiting. In these findings it was not unusual for individual inmates to have accumulated a period of waiting time of 60, 70 or 80 days; at our expense; utilizing hard to come by bed space; for the single reason of awaiting paperwork. Faster paperwork turnaround will help with our overcrowding as well as our budget- calculating the 1,413 days above times the price we charge Eudora and Baldwin municipalities - \$44.66 per inmate per day- This calculation estimates that we spent \$63,104.58 (1/2 price rate) for holding inmates awaiting paperwork. This was the first random day selected for examining this number, but logic tells us that the faster we transfer sentenced inmates to other facilities the larger relief we will feel in overcrowding and in reducing our inmate housing budget.