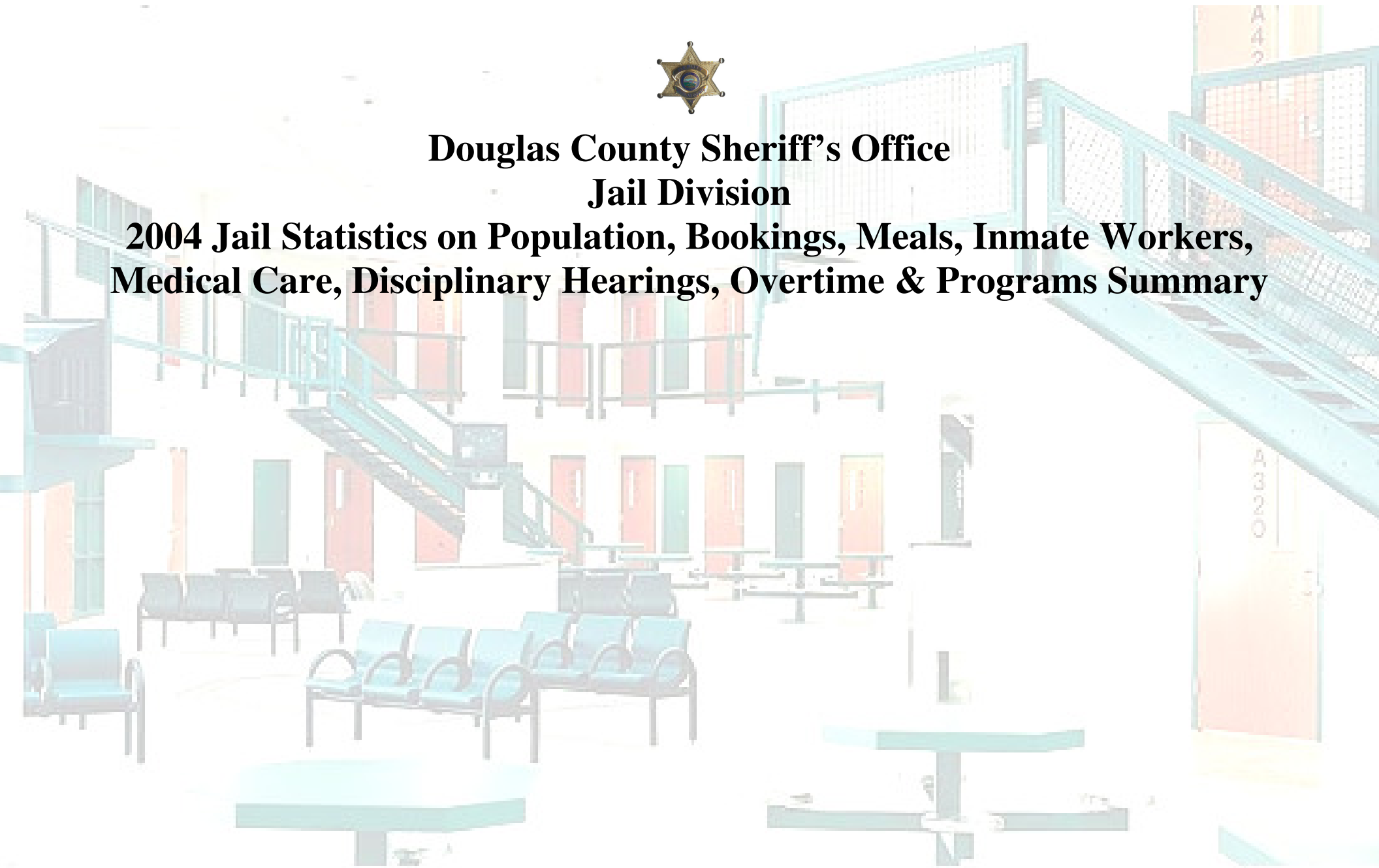




Douglas County Sheriff's Office Jail Division

2004 Jail Statistics on Population, Bookings, Meals, Inmate Workers, Medical Care, Disciplinary Hearings, Overtime & Programs Summary



January 2004

Total # of Bookings – 511 Inmates (395 male, 116 female)
 Average Daily Population- 143 inmates
 Average Population of males- 126 inmates
 Average Population of females- 15 inmates
 Ethnicity breakdown based on Average Daily Population-
 Caucasian- 63%
 Black- 23%
 Hispanic- 2%
 Native American- 11%
 Asian- 1%
 Other- Less than 1%

February 2004

Total # of Bookings – 483 Inmates (384 male, 99 female)
 Average Daily Population- 152 inmates
 Average Population of males- 134 inmates
 Average Population of females- 17 inmates
 Ethnicity breakdown based on Average Daily Population-
 Caucasian- 65%
 Black- 22%
 Hispanic- 2%
 Native American- 9%
 Asian- 1%
 Other- Less than 1%

March 2004

Total # of Bookings – 491 Inmates (397 male, 94 female)
 Average Daily Population- 148 inmates
 Average Population of males- 129 inmates
 Average Population of females- 18 inmates
 Ethnicity breakdown based on Average Daily Population-
 Caucasian- 61%
 Black- 25%
 Hispanic- 2%
 Native American- 10%
 Asian- 2%
 Other- Less than 1%

April 2004

Total # of Bookings – 450 Inmates (359 male, 91 female)
 Average Daily Population- 142 inmates
 Average Population of males- 127 inmates
 Average Population of females- 14 inmates
 Ethnicity breakdown based on Average Daily Population-
 Caucasian- 61%
 Black- 22%
 Hispanic- 2%
 Native American- 14%
 Asian- 1%
 Other- Less than 1%

May 2004

Total # of Bookings – 447 Inmates (359 male, 88 female)
 Average Daily Population- 158 inmates
 Average Population of males- 142 inmates
 Average Population of females- 15 inmates
 Ethnicity breakdown based on Average Daily Population-
 Caucasian- 58%
 Black- 24%
 Hispanic- 3%
 Native American- 14%
 Asian- 1%
 Other- Less than 1%

June 2004

Total # of Bookings – 443 Inmates (332 male, 111 female)
 Average Daily Population- 170 inmates
 Average Population of males- 148 inmates
 Average Population of females- 22 inmates
 Ethnicity breakdown based on Average Daily Population-
 Caucasian- 59%
 Black- 24%
 Hispanic- 3%
 Native American- 14%
 Asian- 1%
 Other- None

July 2004

Total # of Bookings – 440 Inmates (345 male, 95 female)
 Average Daily Population- 170 inmates
 Average Population of males- 147 inmates
 Average Population of females- 23 inmates
 Ethnicity breakdown based on Average Daily Population-
 Caucasian- 59%
 Black- 25%
 Hispanic- 3%
 Native American- 13%
 Asian- Less than 1%
 Other- None

August 2004

Total # of Bookings – 449 Inmates (368 male, 81 female)
 Average Daily Population- 170 inmates
 Average Population of males- 149 inmates
 Average Population of females- 21 inmates
 Ethnicity breakdown based on Average Daily Population-
 Caucasian- 59%
 Black- 27%
 Hispanic- 4%
 Native American- 9%
 Asian- 1%
 Other- None

September 2004

Total # of Bookings – 458 Inmates (362 male, 96 female)
 Average Daily Population- 172 inmates
 Average Population of males- 152 inmates
 Average Population of females- 20 inmates
 Ethnicity breakdown based on Average Daily Population-
 Caucasian- 61%
 Black- 26%
 Hispanic- 3%
 Native American- 9%
 Asian- 1%
 Other- Less than 1%

October 2004

Total # of Bookings – 485 Inmates (368 male, 117 female)
 Average Daily Population- 162 inmates
 Average Population of males- 143 inmates
 Average Population of females- 19 inmates
 Ethnicity breakdown based on Average Daily Population-
 Caucasian- 61%
 Black- 26%
 Hispanic- 4%
 Native American- 8%
 Asian- 1%
 Other- None

November 2004

Total # of Bookings – 487 Inmates (378 male, 109 female)
 Average Daily Population- 163 inmates
 Average Population of males- 140 inmates
 Average Population of females- 23 inmates
 Ethnicity breakdown based on Average Daily Population-
 Caucasian- 63%
 Black- 25%
 Hispanic- 4%
 Native American- 7%
 Asian- 1%
 Other- Less than 1%

December 2004

Total # of Bookings – 458 Inmates (348 male, 110 female)
 Average Daily Population- 154 inmates
 Average Population of males- 128 inmates
 Average Population of females- 26 inmates
 Ethnicity breakdown based on Average Daily Population-
 Caucasian- 65%
 Black- 23%
 Hispanic- 4%
 Native American- 7%
 Asian- 1%
 Other- Less than 1%

2004 Average Daily Population using the average numbers listed previously comes out to be 159.
Break that down further 139 were male and 20 were female.

Total bookings for the year were 5,602.

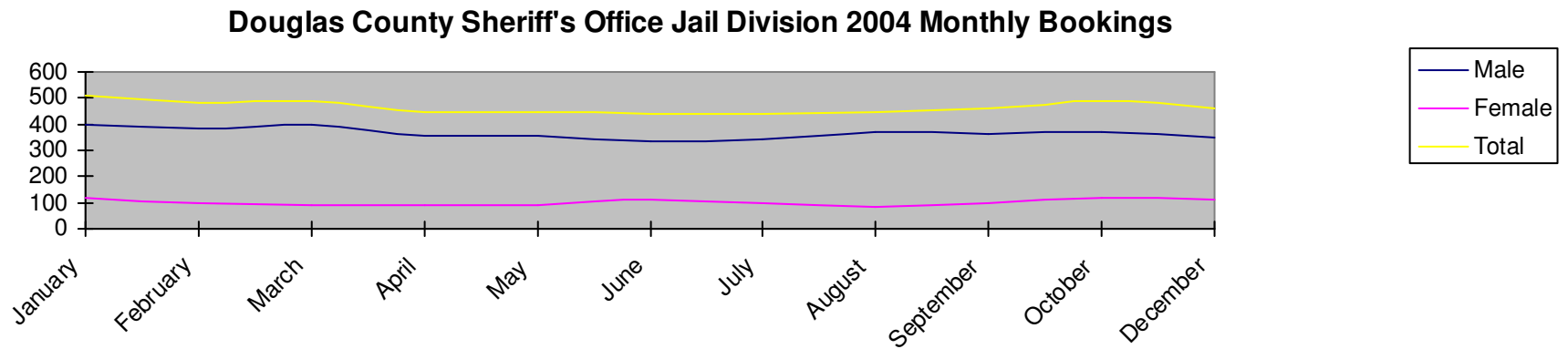
See supporting charts-

2004 Monthly Bookings

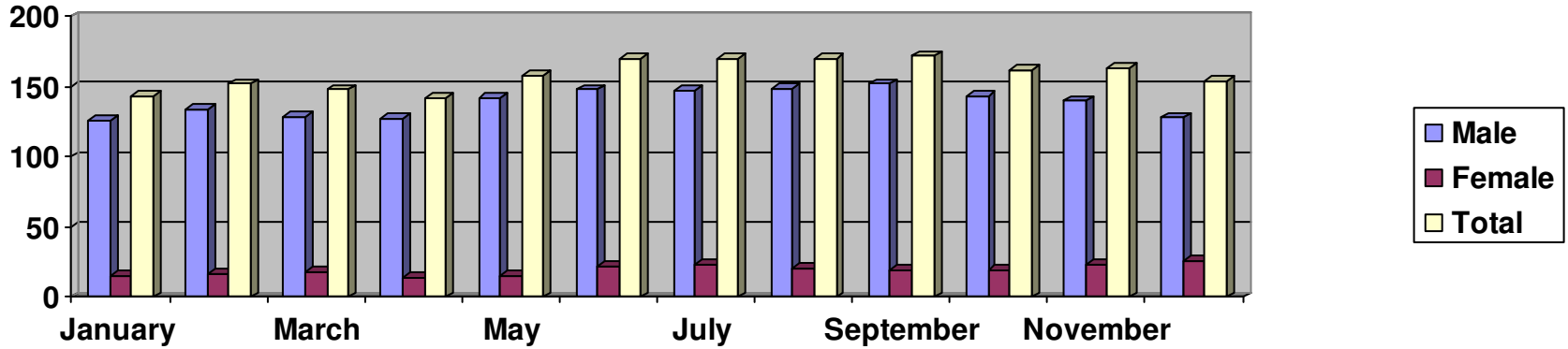
2004 Average Daily Jail Population

2004 Ethnicity break down based on Average Daily Jail Population

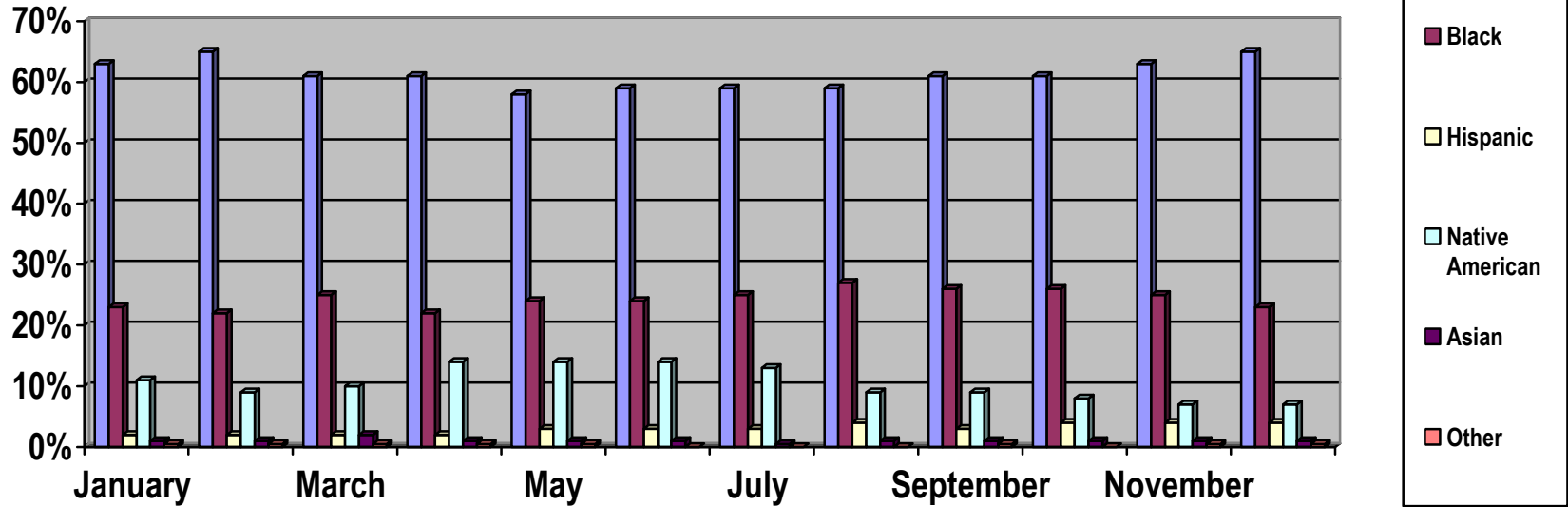
[Statistics taken from "Jalan" monthly reports - "Population Accounting Form-B. Demographics", "County Population Report", and "Booking per day Report provided by Kimberley Smoots"]



Douglas County Sheriff's Office
 Jail Division
 2004 Average Daily Jail Population



Douglas County Sheriff's Office
 Jail Division
 2004 Ethnicity break down based on Average Daily Jail Population



Kitchen Costs 2004 [Statistics taken from Linda Grant, CDM CFPP, Monthly Excel Kitchen and Food Costs Breakdown Report]

Total Costs of groceries, paper goods, cleaning supplies and small equipment- \$297,547.09

Total Meals served- 176,019

Total Costs divided by Total Meals= \$1.69 average cost for each meal

Jail Medical Activity 2004

Daily Clinic- 3248

Physicals- 545

Dr. Clinic- 74

Questions- 2132

Lab- 80

Jail Medical Activity, Out of Facility 2004

X-Ray-21

Dentist- 18

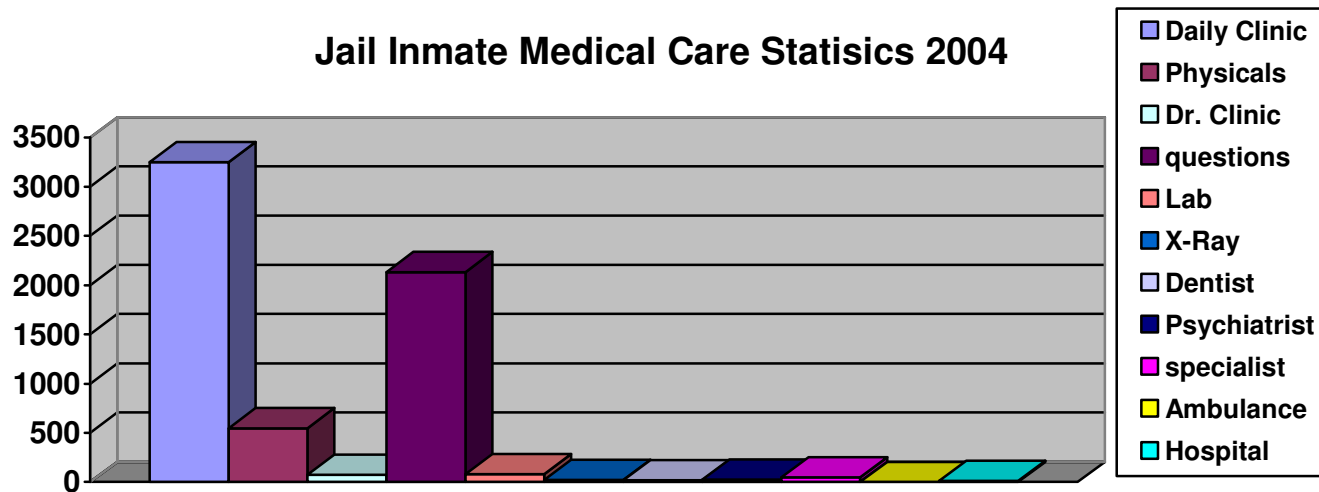
Psychiatrist- 23

Specialist- 46

Ambulance- 0

Hospital- 12

The Jail's medical staff resolved 98% of the inmate health related issues within the facility.



[Statistics taken from VNA Monthly Health Care Services Log, provided by Lt. Wempe]

Inmate Worker Program 2004

56 Inmates participated in the inmate worker program in 2004, 46 males and 10 females.

Inmate time credit was given 22 times by the courts.

Ethnicity breakdown was 35 White, 13 Black and 8 Native American.

Total # of days worked by all inmates in the worker program was 3,524.

Total Days worked 3,524 x 8 hours a day= 28,192 x \$7.00 an hour= 197,344.00 in savings.

Inmate Workers work an estimated 8 hours a day and work 7 days a week. If you divided the days worked 3,524 by 365 days a year- then these 56 inmates who participated in the worker program saved us from having to hire 9.65 employees to cover housekeeping and kitchen duties.

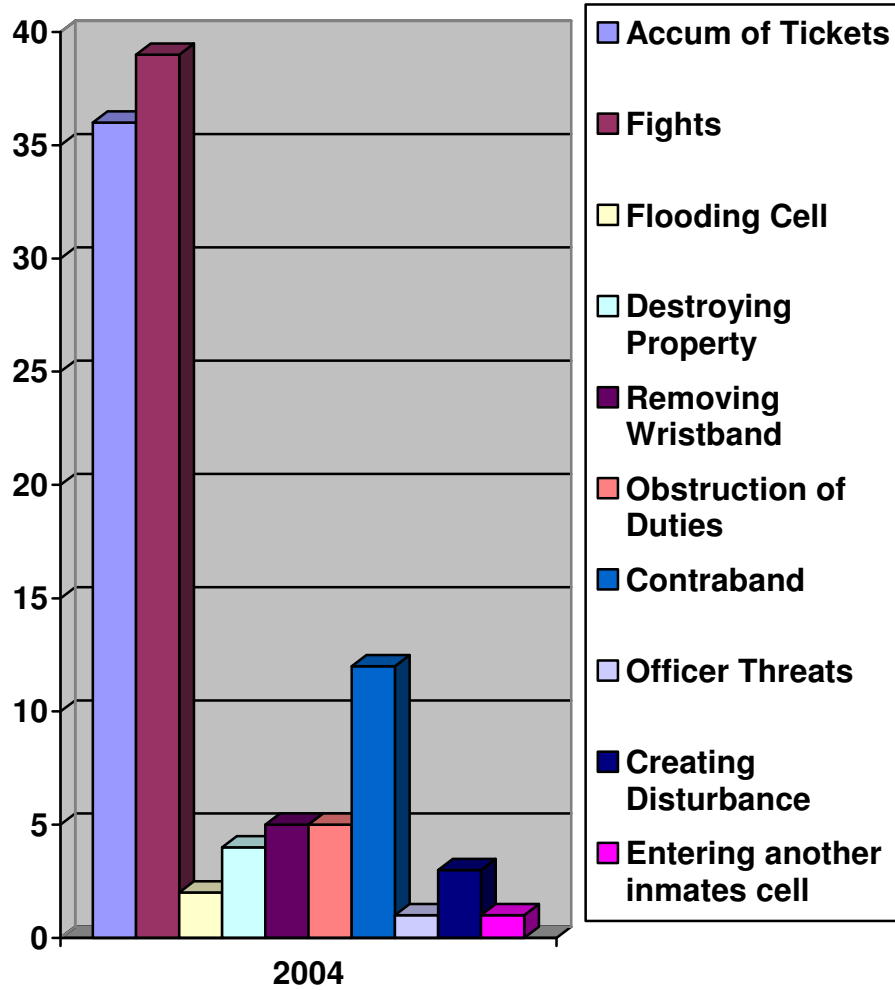
[Statistics taken from Inmate Worker Program Database entered by Sgt. Brown, calculated by Kimberley Smoots]

Disciplinary Hearings 2004

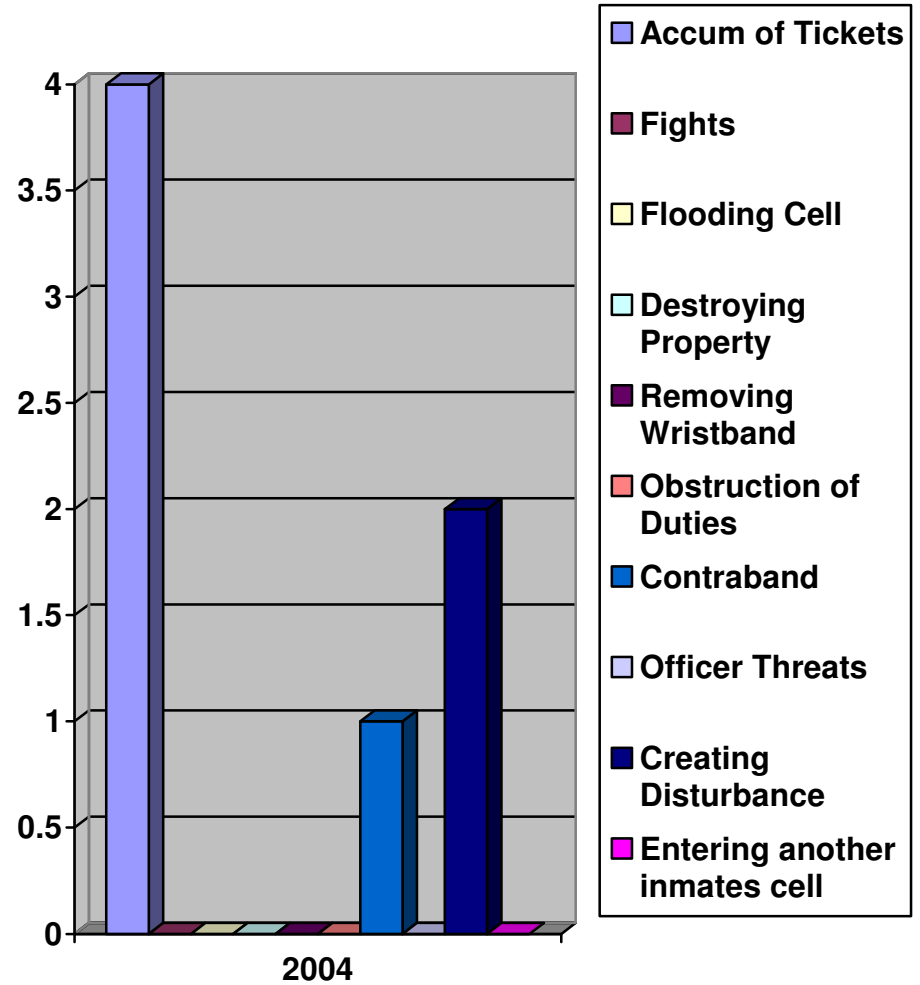
On the next page are Statistics on Disciplinary Hearings which are part of the classification and direct supervision concept. When looking at these numbers, please keep in mind that under “fights”, this number looks high because under most circumstances each inmate involved in one fight will have a disciplinary hearing. Example: 3 inmates involved in one fight = 3 separate disciplinary hearings. This number does not reflect how many fights that actually happened.

[Information provided by Undersheriff Massey]

Male - Disciplinary Hearings 2004



Female- Disciplinary Hearings 2004



Jail Overtime 2004

Pay Period	Jail	Training	Transport	Radio	CERT	Other	Total	Reasons for Total
1/3-1/16	376	17.5	0	0	0	27.5	421	2 at Academy
1/17 - 1/30	379	52	17.5	0	31	28.5	508	2 at Academy
1/31-2/13	505	57	16.5	0	0	18.5	597	2 at Academy, New Lt. Mandatory Meetings
02/14-02/27	652.5	25.5	15.5	0	0	0	693.5	2 at Academy, Pod Meetings
2/28-3/12	573	44	13	0	9	9.5	648.5	2 at Academy, Cert team training, 2 Cell Extractions
3/13-3/26	747.5	26	19	0	0	14	806.5	2 at Academy, 1 on Paternity Leave
3/27-4/9	733	78	0	0	0	0	811	2 at Academy, Cert Team training, Supervisors training
4/10-4/23	630.5	132	0	2.5	see training	7	772	max shakedown, cert training, riot control training, pod meetings, 2 at KLETC
4/24-5/7	694	61	21.5	0	see training	0	776.5	max shakedown, cert training, 2 at KLETC, Campbell transport
5/8-5/21	682	51	17	0	0	0	750	DCT Training, 2 at Academy
5/22-6/4	728	90	0	0	0	40	858	2 at KLETC, OUI Checklane, Clinton Speech
6/5-6/18	769	4	0	0	0	46	819	Vacations, Music Festival at Clinton Lake, Meetings, 2 at KLETC
6/19-7/2	506	52	24.5	9	0	131	722.5	Cook on administrative sick leave, Music Festival at Clinton Lake, Holiday and Vacations
7/3-7/16	655	43	7	0	0	2	707	Negotiator for patrol, Holiday and Vacations- Status Quo
7/17-7/30	648	149	8	3	0	106	914	1 Suspension, 1 at KLETC, Fair
7/31-8/13*	243	88	4	19	see training	32	386	Fair, Hospital Duty, 1 at KLETC
8/14-8/27	161	41	0	0	0	41.5	243.5	1 at KLETC, Hospital Duty x2, 1 Termination, 3 TWOP, 2nd medium officer, DUI Check lane, Range
8/28-9/10	237	42	8	0	0	200.5	487.5	Hospital Duty, 1 at KLETC, 2nd Medium Officer, DUI Checklane, Football Game
9/11-9/24	230.75	66.5	3.5	14.5	64	0	379.25	Football game coverage, 1 at KLETC, 2nd Medium Officer, Cert Training, Suicide Training
9/25-10/8	215	63	0	0	0	19	297	1 at KLETC, 2nd Medium Officer, Suspensions, DCT Training,
10/9-10/22	298	171	7	0	0	5	481	Free State Football game, 1 at KLETC, 2nd Medium Officer, DCT Training, Radar Training
10/23-11/5	147	160	0	0	0	29	336	Harassment Training, Search and Seizure Training, Football games
11/6-11/19	279	162	45	5	0	1	492	2 at KLETC, Firearms Training, Transports, Harassment Training, Supervisors Meeting
11/20-12/3	250	84	0	0	0	1	335	Vacation day, personal days, 2 at KLETC, DCT Shakedowns
12/4-12/17	235	65	0	0	61	0	361	Cell Shakedowns, Report Writing, 2 at KLETC
12/18-12/31	321	18	0	0	0	0	339	2 at KLETC, Use of Force Training, Vacations
Yearly Totals	11895.25	1842.5	227	53	165	759	14941.8	

*Went to 12 hour shifts- not the significant OT reduction

Due to not being specific on OT slips, Some Cert Team Hours were placed into Jail hours or Jail Training Hours.

[Statistics taken from timesheets when processed by Undersheriff Massey, calculated by Kimberley Smoots]