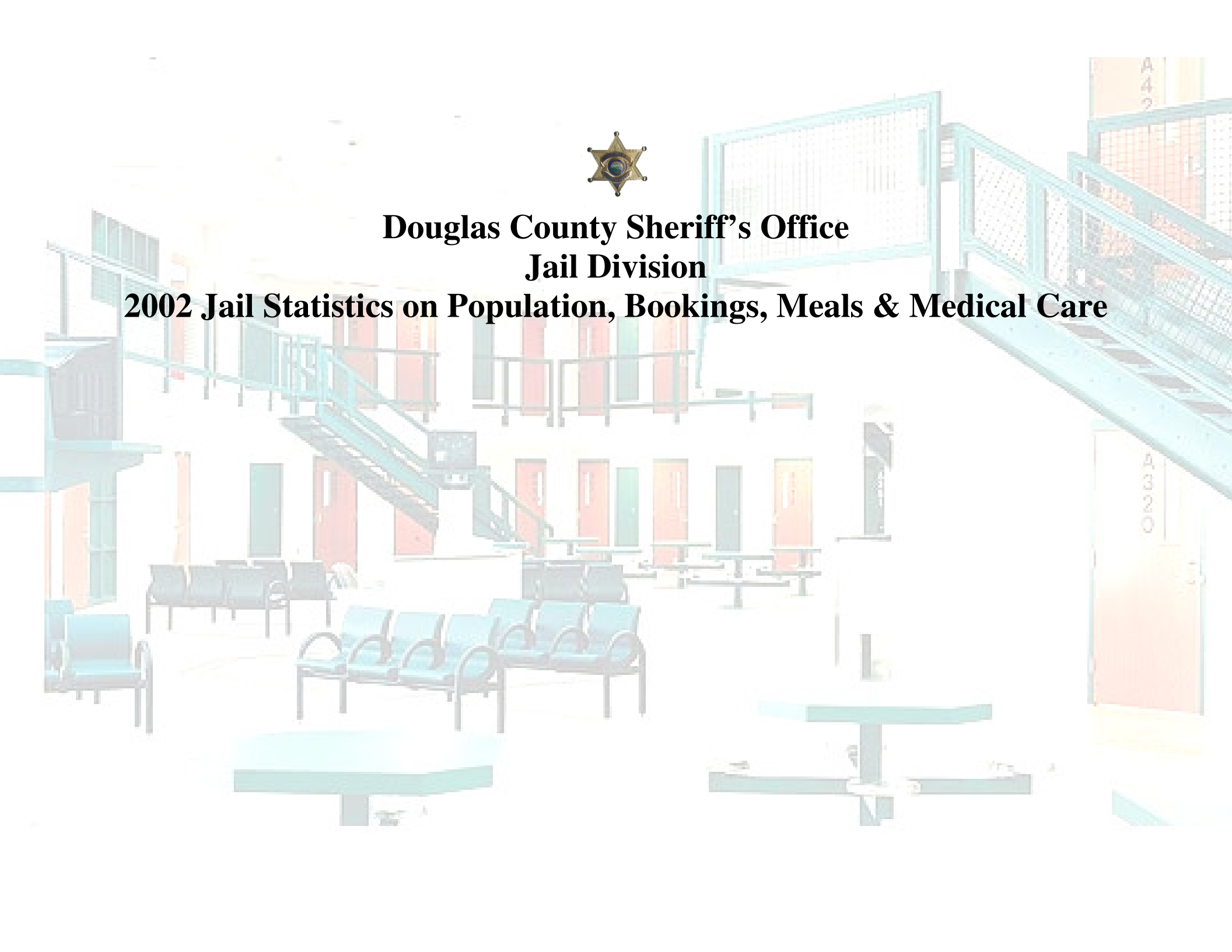




**Douglas County Sheriff's Office
Jail Division**

2002 Jail Statistics on Population, Bookings, Meals & Medical Care



January 2002

Total # of Bookings – 436 Inmates (329 male, 107 female)

Average Daily Population- 113 inmates

Average Population of males- 97 inmates

Average Population of females- 15 inmates

Ethnicity breakdown based on Average Daily Population-

Caucasian- 59%

Black- 29%

Hispanic- 2%

Native American- 9%

Asian- 1%

Other- 0%

February 2002

Total # of Bookings – 426 Inmates (346 male, 80 female)

Average Daily Population- 105 inmates

Average Population of males- 93 inmates

Average Population of females- 11 inmates

Ethnicity breakdown based on Average Daily Population-

Caucasian-63 %

Black- 26%

Hispanic- 4%

Native American-7%

Asian- less than 1%

Other- less than 1%

March 2002

Total # of Bookings – 540 Inmates (436 male, 104 female)

Average Daily Population- 108 inmates

Average Population of males- 93 inmates

Average Population of females- 14 inmates

Ethnicity breakdown based on Average Daily Population-

Caucasian- 63%

Black- 24%

Hispanic- 4%

Native American- 8%

Asian- 1%

Other- less than 1%

April 2002

Total # of Bookings – 541 Inmates (426 male, 115 female)

Average Daily Population- 116 inmates

Average Population of males- 101 inmates

Average Population of females- 14 inmates

Ethnicity breakdown based on Average Daily Population-

Caucasian- 62%

Black- 25%

Hispanic- 4%

Native American- 8%

Asian- 1%

Other- less than 1%

May 2002

Total # of Bookings – 534 Inmates (437 male, 97 female)

Average Daily Population- 120 inmates

Average Population of males- 106 inmates

Average Population of females- 13 inmates

Ethnicity breakdown based on Average Daily Population-

Caucasian- 62%

Black- 23%

Hispanic- 2%

Native American- 11%

Asian- 2%

Other- less than 1%

June 2002

Total # of Bookings – 540 Inmates (418 male, 122 female)

Average Daily Population- 125 inmates

Average Population of males- 109 inmates

Average Population of females- 16 inmates

Ethnicity breakdown based on Average Daily Population-

Caucasian- 59%

Black- 28%

Hispanic- 1%

Native American- 11%

Asian- 1%

Other- Less than 1%

July 2002

Total # of Bookings – 471 Inmates (364 male, 107 female)
 Average Daily Population- 121 inmates
 Average Population of males- 106 inmates
 Average Population of females- 14 inmates
 Ethnicity breakdown based on Average Daily Population-
 Caucasian- 57%
 Black- 32%
 Hispanic- 1%
 Native American- 9%
 Asian- less than 1%
 Other- 1%

August 2002

Total # of Bookings – 517 Inmates (435 male, 82 female)
 Average Daily Population- 130 inmates
 Average Population of males- 117 inmates
 Average Population of females- 12 inmates
 Ethnicity breakdown based on Average Daily Population-
 Caucasian- 57%
 Black- 32%
 Hispanic- 2%
 Native American- 8%
 Asian- 1%
 Other- None

September 2002

Total # of Bookings – 479 Inmates (392 male, 87 female)
 Average Daily Population- 126 inmates
 Average Population of males- 113 inmates
 Average Population of females- 12 inmates
 Ethnicity breakdown based on Average Daily Population-
 Caucasian- 55%
 Black- 32%
 Hispanic- 2%
 Native American- 10%
 Asian- 1%
 Other- less than 1%

October 2002

Total # of Bookings – 466 Inmates (354 male, 112 female)
 Average Daily Population- 121 inmates
 Average Population of males- 107 inmates
 Average Population of females- 13 inmates
 Ethnicity breakdown based on Average Daily Population-
 Caucasian- 59%
 Black- 30%
 Hispanic- 3%
 Native American- 7%
 Asian- 1%
 Other- less than 1%

November 2002

Total # of Bookings – 481 Inmates (380 male, 101 female)
 Average Daily Population- 121 inmates
 Average Population of males- 104 inmates
 Average Population of females- 15 inmates
 Ethnicity breakdown based on Average Daily Population-
 Caucasian- 55%
 Black- 35%
 Hispanic- 2%
 Native American- 6%
 Asian- 2%
 Other- less than 1%

December 2002

Total # of Bookings – 449 Inmates (359 male, 90 female)
 Average Daily Population- 112 inmates
 Average Population of males- 98 inmates
 Average Population of females- 14 inmates
 Ethnicity breakdown based on Average Daily Population-
 Caucasian- 59%
 Black- 33%
 Hispanic- 2%
 Native American- 6%
 Asian- Less than 1%
 Other- None

2002 Average Daily Population using the average numbers listed previously comes out to be 118.
Break that down further 104 were male and 14 were female.

Total bookings for the year were 5,880.

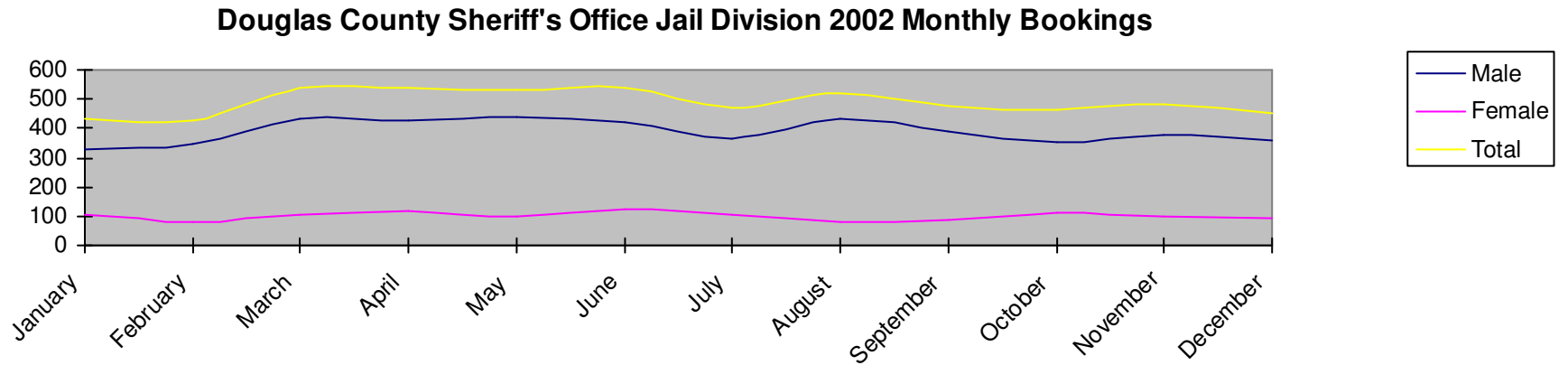
See supporting charts-

2002 Monthly Bookings

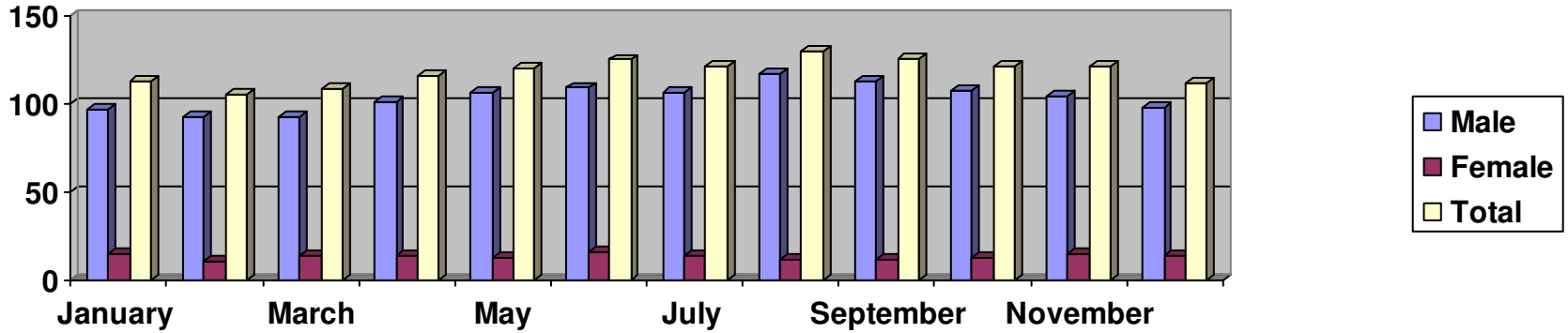
2002 Average Daily Jail Population

2002 Ethnicity break down based on Average Daily Jail Population

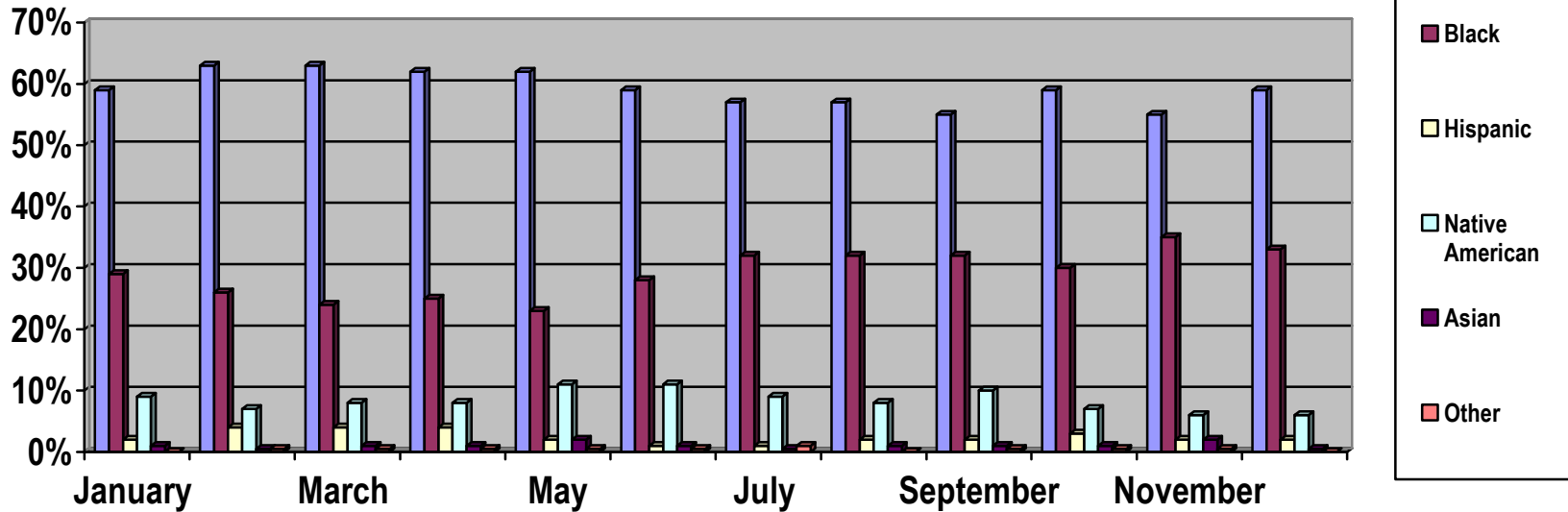
[Statistics taken from "Jalan" monthly reports - "Population Accounting Form-B. Demographics", "County Population Report", and "Booking per day Report provided by Kimberley Smoots"]



Douglas County Sheriff's Office
 Jail Division
 2002 Average Daily Jail Population



Douglas County Sheriff's Office
 Jail Division
 2002 Ethnicity break down based on Average Daily Jail Population



Kitchen Costs 2002 [Statistics taken from Linda Grant, CDM CFPP, Monthly Excel Kitchen and Food Costs Breakdown Report]

Total Costs of groceries, paper goods, cleaning supplies and small equipment- \$219,690.75

Total Meals served- 139,490

Total Costs divided by Total Meals= \$1.57 average cost for each meal

Jail Medical Activity 2002

Daily Clinic- 2284

Physicals- 473

Dr. Clinic – 99

Questions- 1452

Lab-86

Jail Medical Activity, Out of Facility 2002

X-Ray- 15

Dentist- 3

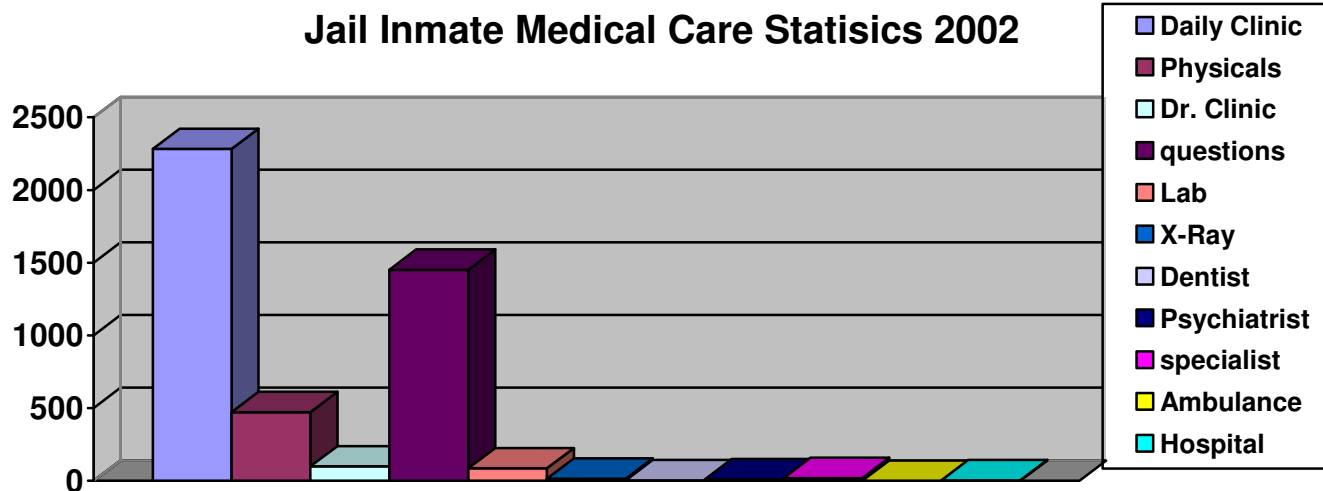
Psychiatrist- 10

Specialist- 28

Ambulance- 0

Hospital- 4

The Jail’s medical staff resolved 98.6% of the inmate health related issues within the facility.



[Statistics taken from VNA Monthly Health Care Services Log, provided by Lt. Wempe]